



Temagami First Nation/ Teme-Augama Anishnabai are creating a Master Land Use Plan!

The Master Land Use Plan will guide future development on Bear Island and the Proposed Settlement Lands (shown on the map to the right).

Staff, Lands Committee and community members are working together to answer the following questions that will be addressed in the Master Land Use Plan. *Where should the community develop? What should be built? What should we preserve? How do we best use our lands?*



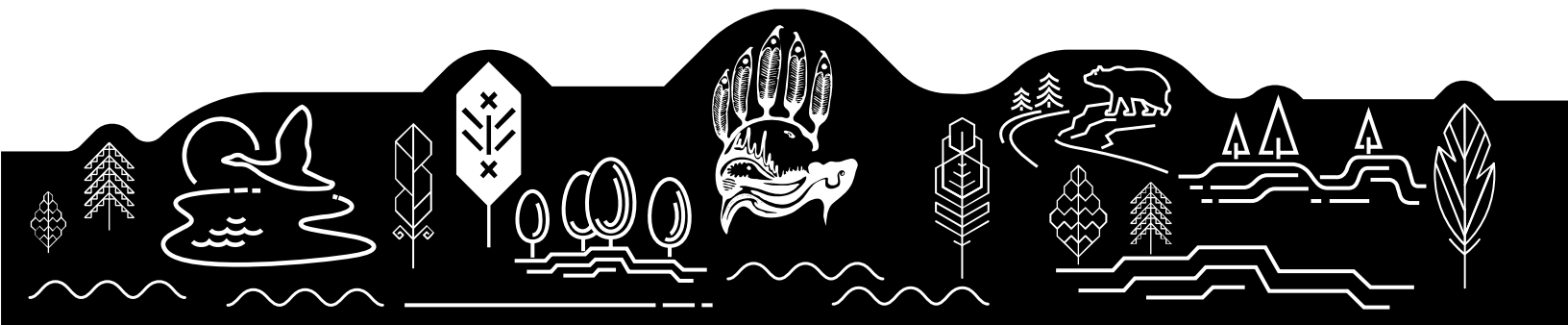
What is a Master Land Use Plan?

- It is a long-term strategic plan that guides the future of Bear Island and the Proposed Settlement Lands
- It provides a set of policies and maps to guide future development of these lands
- It considers how the physical environment (e.g., houses, shops, roads) interacts with the natural environment and areas of importance to the community (e.g., traditional land use areas, historical sites to preserve, etc).

Why are we preparing a Master Land Use Plan?

On June 24, 2017, TFN voted to ratify the Temagami First Nation Land Code. Through the Land Code we regained control over our reserve lands and resources. The Master Land Use will guide decisions related to the physical development, preservation, and overall management of our reserve lands. **We invite you to take a look at the video created by the Lands Committee.**

Video Link: <https://www.temaqamifirstnation.ca/land-and-resources/land-management/>

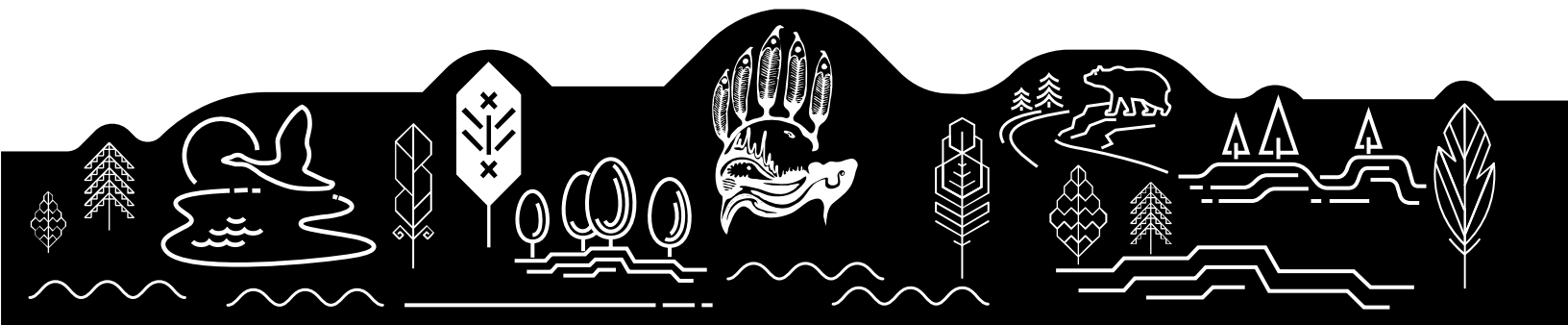
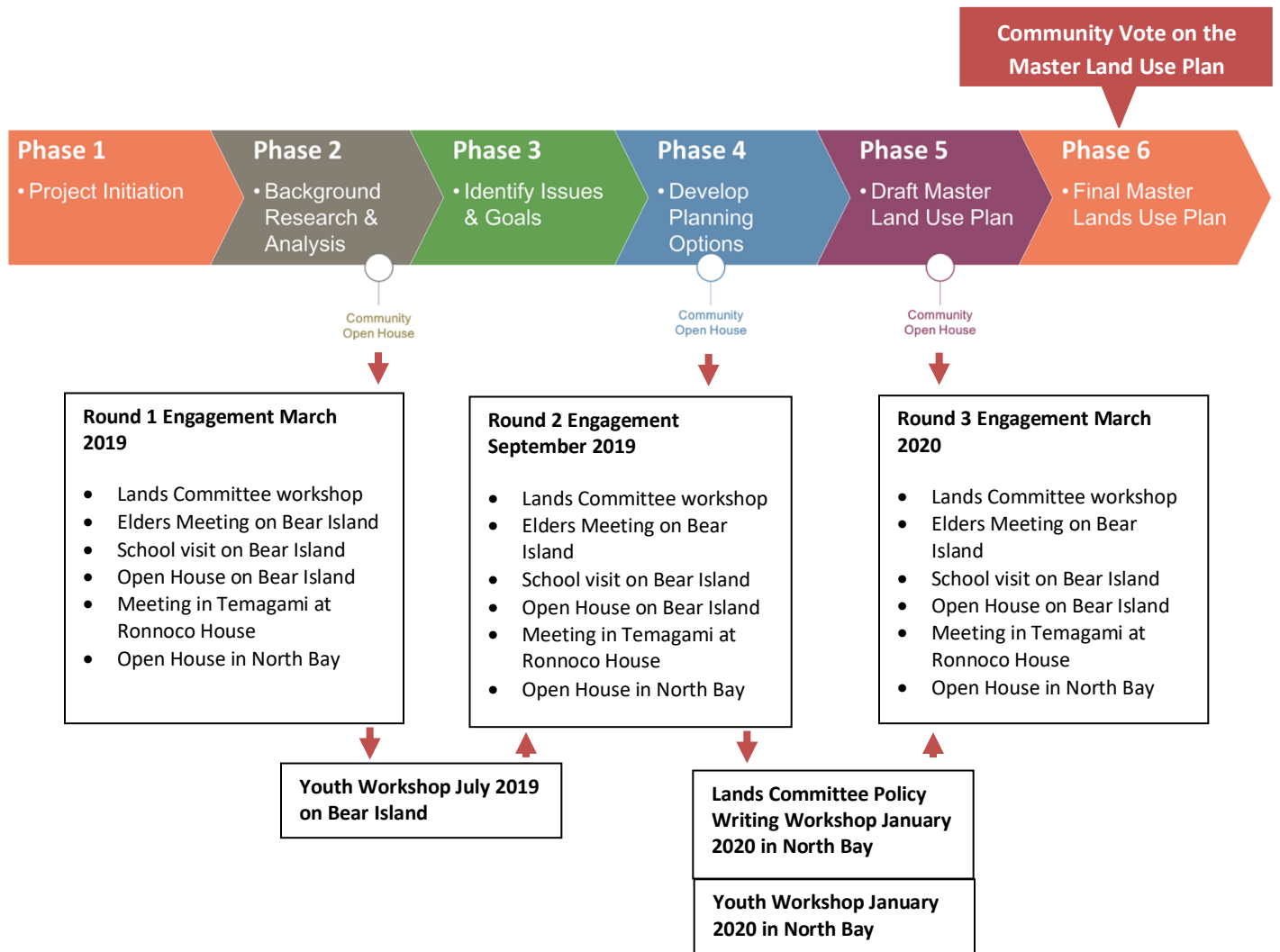




Overview of Engagement Activities to Date

This plan is the community’s plan and a plan for our future generations. We have been speaking with the community about the Land Use Plan since March 2019, but work started before then. Our future engagement timing and approach is unclear due to COVID-19 concerns, but we will let you know when you can participate in future activities.

For now, we invite you to complete an online survey by September 15, 2020 to provide your feedback on the Master Land Use Plan and for a chance to win a prize. A link to the survey is included at the end of the newsletter.



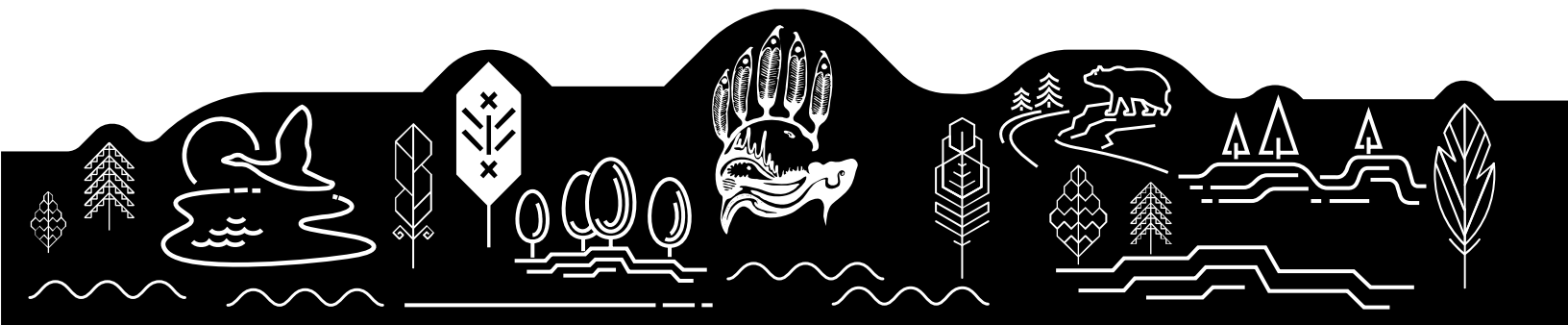


What we Have Heard so Far

The third round of consultation took place the week of March 9, 2020 on Bear Island, the Town of Temagami, and North Bay. These sessions confirmed that people generally agree with the goals, objectives and policies outlined to date. We received great feedback on the community's preferences, priorities and what people would like to see for the future of Bear Island and the Proposed Settlement Lands. We did however have reduced participation due to concerns about COVID-19. We therefore invite you to review this newsletter and respond to the survey (link provided at the end of this newsletter).

Community Priorities

- **Protect and enhance** shores of Lake Temagami and surrounding lake system
- Development must **protect critical habitat areas**
- High potential for **undocumented archeological sites** requiring protection
- **Economic development and employment for members** on Bear Island and the Proposed Settlement Lands is important
- Current **housing shortage** on Bear Island
- **Servicing may be a challenge** if development is not located on the loop
- Environmental constraints from the **old landfill** and **quarry** may result in limited developmental potential around those areas
- Bear Island has **limited development capacity**
- Strong support for a **New Community Site** on the mainland
- **Community togetherness is important**





Revised Vision Statement and Slogan

After receiving community input on the vision statement during the fall 2019 engagement session, the following revised vision statement was presented at the spring 2020 session:

“Honouring our ancestors and future generations, our land use reflects Anishnabai values and responsibilities to n’Daki Menan.”

The majority of citizens who participated in the community events were supportive of the revised vision statement.

In addition, the following slogan was presented at the spring 2020 session: *“Our land, our home, our destiny”*. Based on community input two potential new slogans have been included, which include:

Option 1: *“Our home, our land, our choices”*

Option 2: *“N’Daki Menan, our home our destiny”*

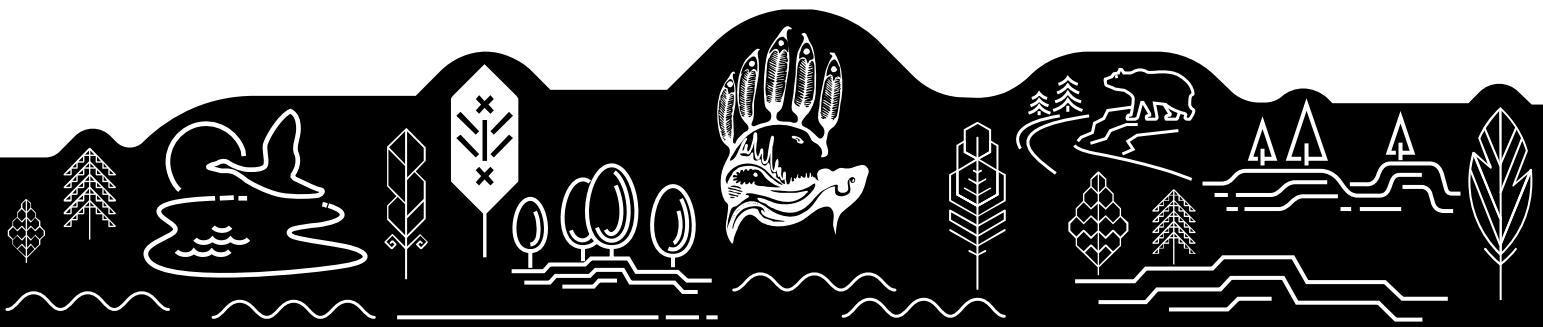
Vote on your preferred slogan in the survey!

Naming the Land Use Plan

The following three Master Land Use Plan names were presented to community members.

- Teme Augama Anishnaabeg Akii n’zhit te win (Deep Water People, Our Land Plan)
- Akii n’zhit te win (Land Plan)
- Teme Augama Anishnaabeg (Deep Water People)

The majority of community member who participated in the community events preferred #1.





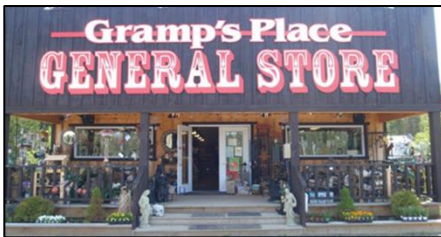
Land Use Designations: Bear Island and the Proposed Settlement Lands

Land Use Designations communicate what the future purpose of the land is (e.g., environmental protection, development of housing). Land Use Designations are usually shown through colours or patterns on a map. The following Land Use Designations and draft objectives were presented to community members during the third round of consultation.



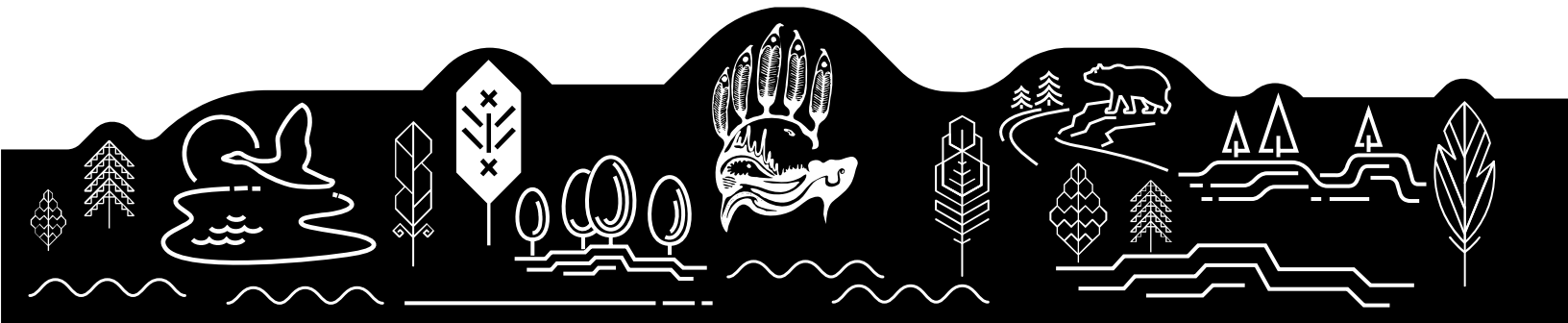
Residential

- Create a healthy and vibrant place for community members to live.
- Provide a variety of housing options that support all members of the community (including Elders, singles, families, and people with disabilities).
- Encourage growth in existing areas so that infrastructure investments are used efficiently.
- Promote home-based businesses as an economic development and income generating opportunity for members.
- Promote the use of green building design to lower long-term costs and reduce environmental impacts.



Commercial

- Provide a range of commercial uses to meet the needs of Elders, singles, youth, young members, families, and people with disabilities.
- Encourage commercial development in strategic locations to limit traffic going through the community, reduce travel times and to provide economic benefits and business opportunities for community members.
- Support the creation of tourism based commercial uses that provide recreational and natural outdoor experiences on TFN/TAA Lands.
- Explore land leasing opportunities on TFN/TAA lands to generate revenue.





Highway Commercial

- Encourage commercial development, particularly retail, along highway frontage.
- Generate employment opportunities for TFN/TAA.
- Explore economic development opportunities, including partnerships and joint venture opportunities, with outside businesses, specifically on the Proposed Settlement Lands. TFN/TAA must be consulted during this process and be presented with options.



Community Buildings and Uses

- Create community gathering places that promote community togetherness.
- Provide a safe environment for children to live, learn and play.
- Promote learning and sharing of traditional knowledge across present and future generations, including youth, adults and Elders.
- Explore opportunities to repurpose existing buildings on Bear Island.



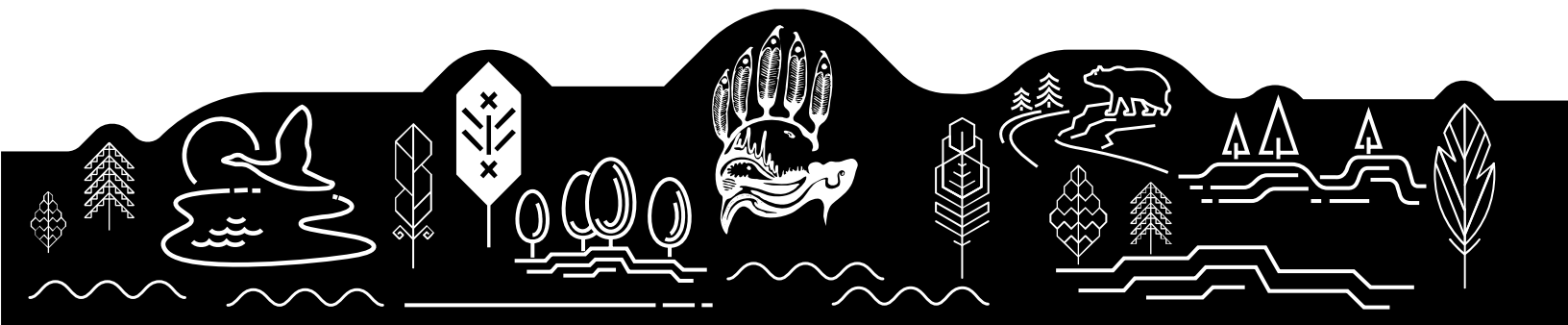
Cultural Heritage Protection and Enhancement

- Protect, preserve and enhance TFN/TAA cultural and traditional land use areas within the community, such as hunting, fishing, and wild rice harvesting areas.
- Encourage a sense of home and family connections through the preservation of TFN/TAA culture and traditional practices.
- Sacred sites, culturally significant sites, historical sites, and burial sites are to be preserved and maintained for present and future generations.



Cemetery

- Honour community members who have passed.
- Establish a Committee and budget too maintain cemetery.





Recreation and Parks

- Promote an active lifestyle and healthy living for everyone, including people with disabilities.
- Provide indoor and outdoor recreation and community gathering opportunities.
- Strengthen the preservation of existing trapping, hunting and fishing areas, and encourage use of these areas by community members.
- Provide opportunities for people to experience TFN/TAA Lands in a respectful and sustainable manner.



Infrastructure

- Support low impact development techniques and the use of renewable energy where feasible to lessen the strain on existing infrastructure.
- Promote remediation of contaminated sites to contribute to the health of the community and wildlife who inhabit the area.



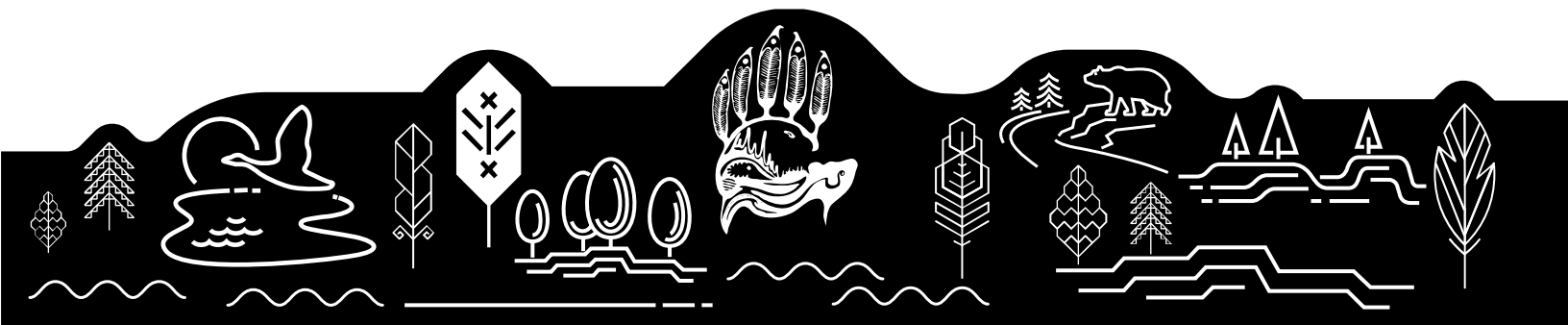
Potential Future Development

- Encourage a culture of sustainability and environmental stewardship.
- Protect and manage natural areas and resources, including the Lake Temagami shoreline, for the benefit of all community members and wildlife who inhabit the area.
- Maintain the old pine component of the Skyline Reserve for aesthetic beauty, except in community areas where trees would have to be removed for central docking to occur.



Environmental Protection

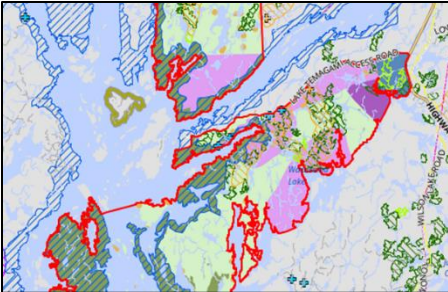
- Encourage a culture of sustainability and environmental stewardship.
- Protect and manage natural areas and resources, including the Lake Temagami shoreline, for the benefit of all community members and wildlife who inhabit the area.
- Maintain the old pine component of the Skyline Reserve for aesthetic beauty, except in community areas where trees would have to be removed for central docking to occur.





Industrial Area

- Encourage industrial development that is built to a high environmental standard, minimizing the potential for environmental impacts.
- Promote opportunities for community owned businesses.
- Support the processing and selling of natural resources.



New Community Site

- Set aside and protect land to support community togetherness, growth and development.
- Support the development of a new community site for current and future generations.
- Provide economic development opportunities by leasing lands for revenue generating purposes.



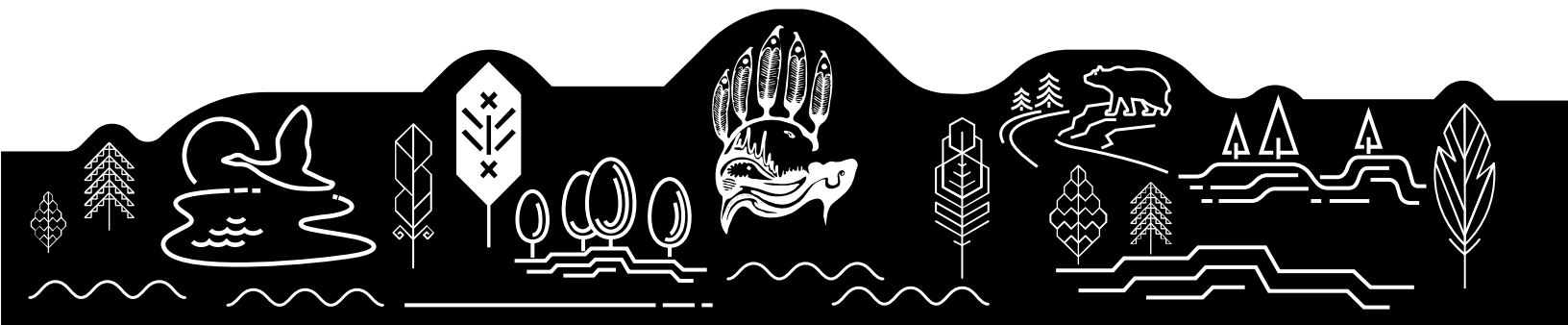
Holistic Management Area (Proposed Settlement Lands)

- Promote responsible stewardship of lands and resources.
- Encourage environmentally sustainable economic development, including commercial forest management, and mineral opportunities in areas of high mineral potential, while ensuring the protection of important values and features.
- Explore new, innovative and emerging industries in Northern Ontario, such as green technologies, clean energy generation and new resource demands.
- Support clean energy projects such as wind, solar and geothermal, where feasible and economically viable.



Natural Resource Extraction

- Promote respectful resource exploration and extraction practices that minimize the impact on the natural environment.
- Create employment and income generation opportunities for the community through resource exploration and extraction activities.





Holistic Management Area

Based on feedback received as part of the consultation, a few changes have been made to the **Land Use Designations** mentioned above. One major change is that we have removed the **“Natural Resource Extraction Area” Designation** from the Master Land Use Plan and introduced a **“Holistic Management Area” Designation**. The Holistic Management Area is intended to support resource-based economic development activities that can advance community development goals, and promote sustainable use of natural resource potential.

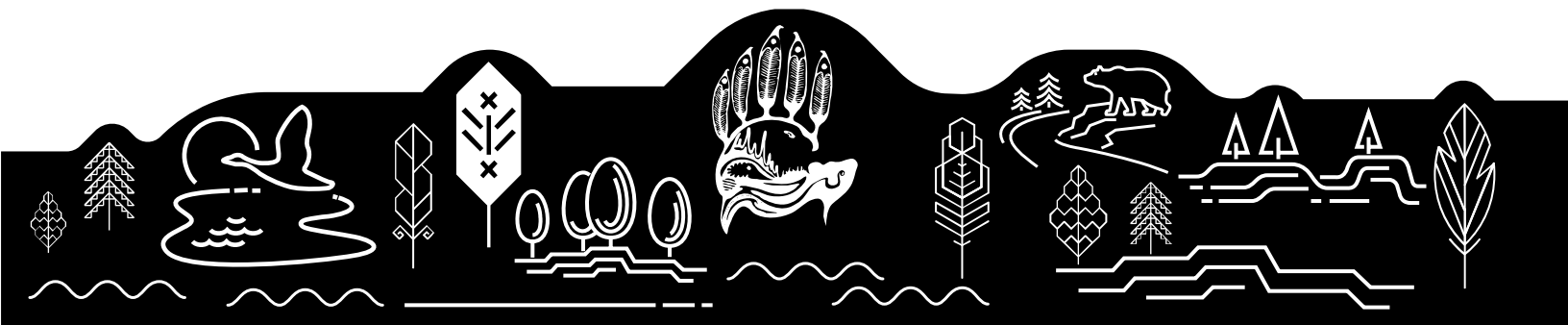


The Holistic Management Area would consider the following land uses:

- Active Recreation (e.g., Motorized Trails, Boat Launches, Recreational Facilities)
- Passive Recreation (e.g., Walking Trails, Parks, Canoe Routes, Cross-Country Skiing, Swimming Area, Boardwalk)
- Culturally Significant Sites or Areas (e.g., Ceremonial Places, Historic Homesteads, Petroglyphs, Burial Sites, and Medicinal Plant, Hunting/Fishing, Harvesting, and Fish Spawning Areas)
- Traditional Practices (e.g., Tapping of Trees and Berry Picking)
- Animal Farm, Vegetable Farm, and Co-Ops
- Renewable Energy (e.g., solar, geothermal, fibre, hemp, wood)
- Forestry Management
- Claim staking, prospecting, exploration and mine development
- Mineral Resource Extraction (small to medium size mines)
- Quarrying (drill and blast)
- Aggregate extraction
- Commercial Development that supports industry activities, such as the processing of natural resources (e.g., Saw Mill, Aggregate Processing Facility, Warehousing, Storage Space)

Provide Your Feedback!

We invite you to respond to the survey to share with us whether you agree or disagree with the types of land uses that would be considered in the Holistic Management Area. A link to the survey has been provided at the end of this newsletter.





Potential Future Development Sites

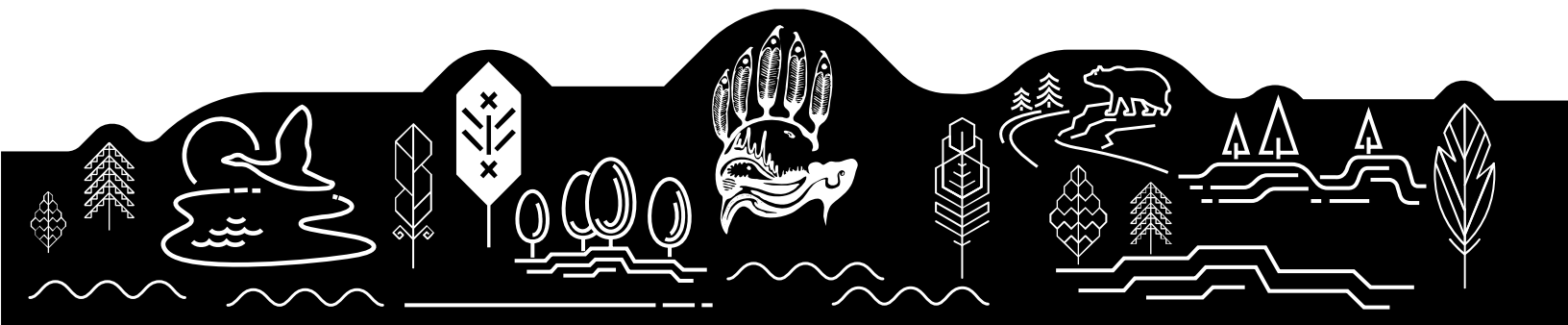
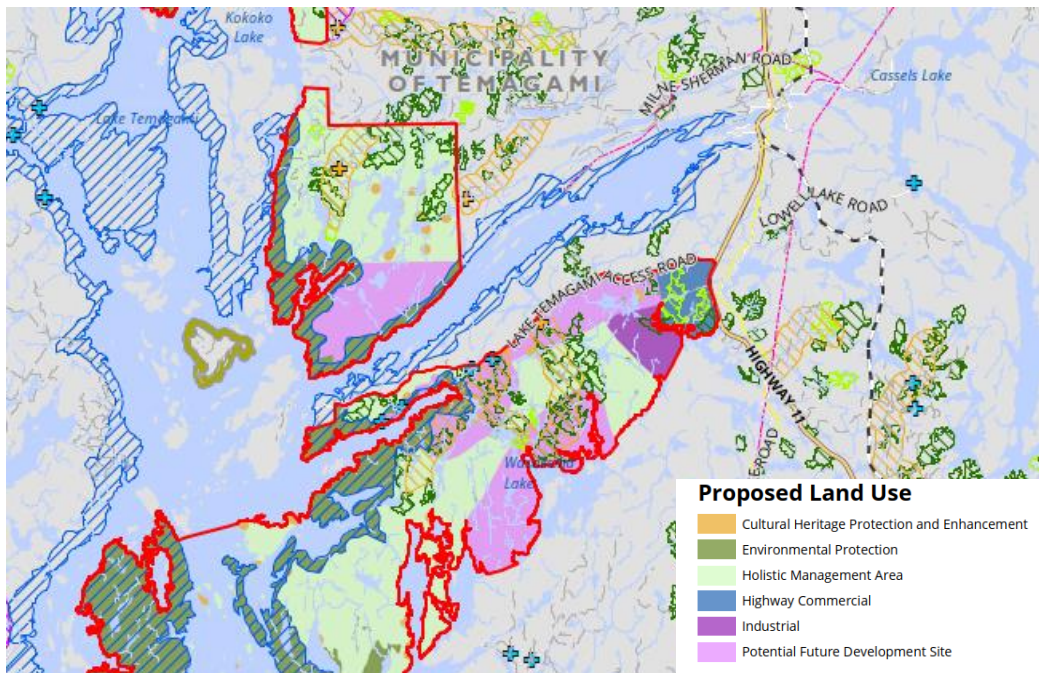
Back in 1997, Shiningwood Bay was identified as a suitable new community site. Reasons for why the site was chosen include:

- The site is located in proximity to the Landing at Lake Temagami used for access to Bear Island.
- Water quality tests taken in 1997 indicate that the Shiningwood Bay water quality is a suitable source for potable water to service the community.
- The site includes an all-weather road, resulting in improved access to emergency and health services and economic opportunities.

While Shiningwood Bay serves as a marker for a new community site, through the consultations other sites were mentioned such as Faskins Point, Wasaksina, and Diamond Lake.

Provide Your Feedback!

We invite you to respond to the survey to share with us any other locations that you feel would be suitable as a Potential Future Development Site. A link to the survey has been provided at the end of this newsletter.





Frequently Asked Questions

What is the purpose of a Master Land Use Plan?

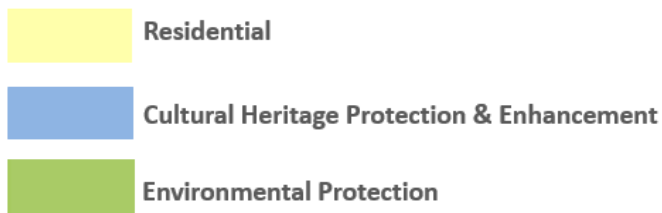
The Master Land Use Plan will define our vision and long-term goals for the future of Temagami First Nation reserve lands. The Master Land Use Plan will need to be adopted as described in the Temagami First Nation Land Code and will be reviewed regularly to consider how things evolve.

Why are we preparing a Master Land Use Plan?

On June 24, 2017, TFN voted to ratify the Temagami First Nation Land Code, which provides our community with control over the management of our lands. A Master Land Use Plan is one of the documents that supports us to manage our lands in an organized way. In the future, once zoning by-laws/allocation are developed, the Master Land Use Plan and Land code will have to be followed by everyone.

What is a Land Use Designation?

A designation is a category of land use. Designations are usually shown through colours or patterns. Designations communicate what the purpose of the land is (e.g., protect, develop).

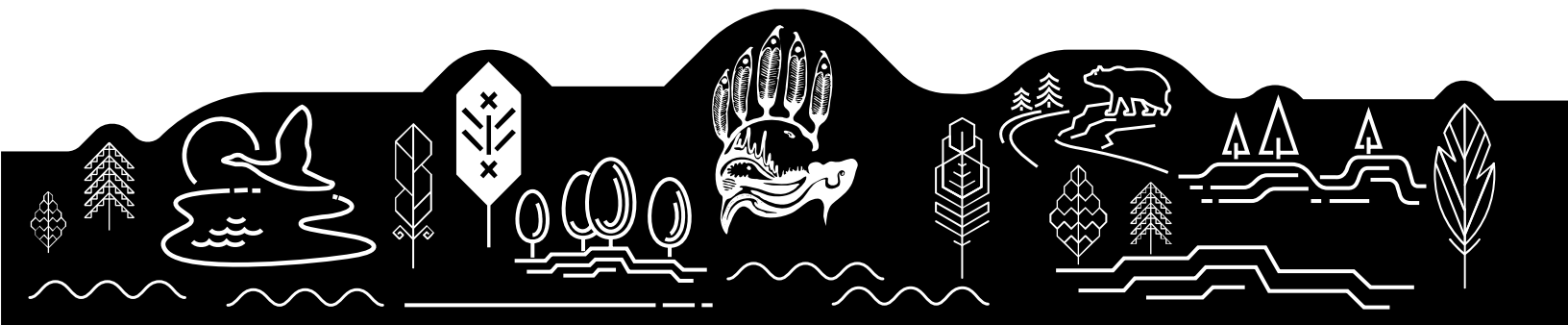


What is a Land Use Policy?

A land use policy communicates what is allowed and what is not allowed within a land use designation. It sets expectations for what is to be protected and what can be developed. These land use policies are being developed as part of the Master Land Use Plan.

What is the difference between a Master Land Use Plan and a Zoning By-law?

A Zoning By-law provides details on where buildings and other structures can be located, the types of buildings that are permitted and how they may be used, and the lot sizes and dimensions, parking requirements, building heights and setbacks from the street. A zoning By-law would be prepared after the Master Land Use Plan.





Are we settling with the “Proposed Settlement Lands”?

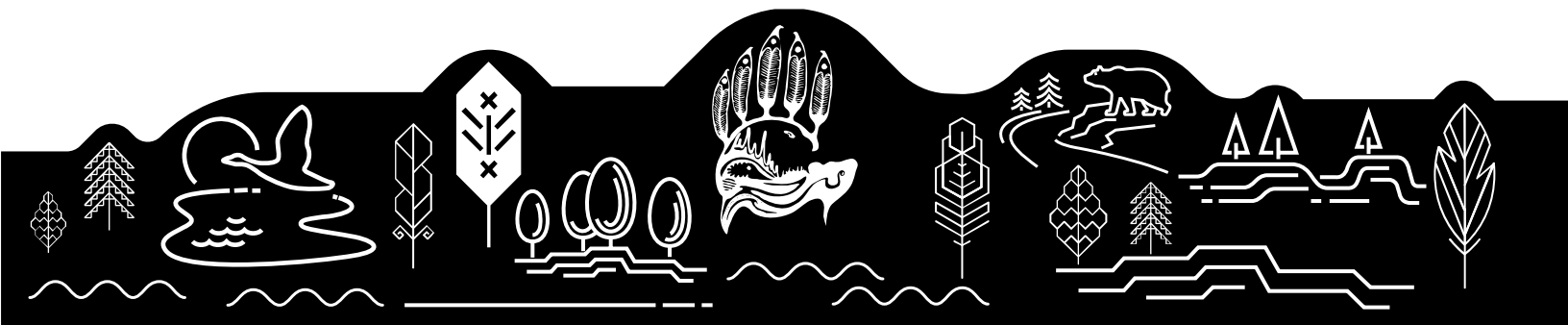
No, the “Proposed Settlement Lands” (Lands Set Aside) are part of our ongoing negotiations. The Proposed Settlement Lands were first selected by our ancestors when they wanted to make treaty in 1883, known as the Austin Bay Tract. The community selected the lands in 1994.

Who will have to follow the Land Use Plan?

Everyone will need to follow the Land Use Plan (including community members and others).

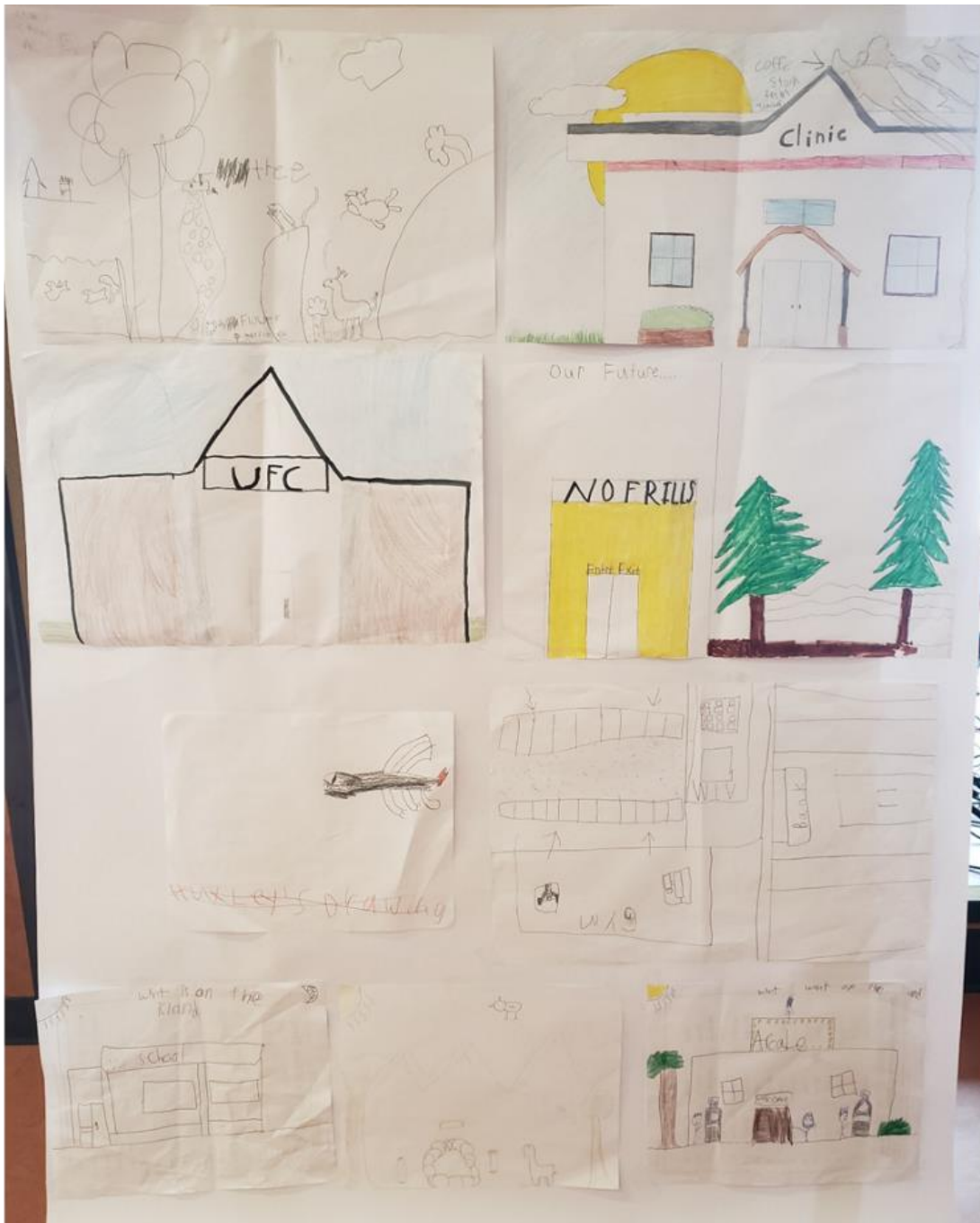
If something is permitted in the Land Use Plan, does that mean everyone can go ahead and build it?

No, just because something is permitted (such as building a house) does not mean that it can just be built. There are plans and approvals that need to be completed before any development can occur. This also holds true for any industrial development or resource extraction on the Proposed Settlement Lands.





Drawings by Students at the Laura McKenzie Learning Centre of what they would like to see on Bear Island in the future.





Next Steps

We will review all of your comments from the third community consultation and consider them as we update the draft Master Land Use Plan.

Community Engagement and COVID-19

To keep everyone safe and healthy, all in-community engagement activities have been postponed. In the meantime, fill out the online survey to continue to provide your feedback.

Survey!

This Master Land Use Plan needs to reflect the needs, wants and interests of our community. It is a plan for you that should be created by you. This is why it is important that you provide your feedback.

Fill out the Survey by September 15, 2020 for a chance to win a prize.

The survey can be accessed at

<https://forms.gle/zGZ38kmCV1C7s9RF7>

or by scanning the following code using the camera on your phone or tablet.

