

Temagami First Nation: Land Use Opportunities and Constraints

Theme	Constraints	Opportunities
<p>Natural Environment & Resources</p>	<ul style="list-style-type: none"> Limited developable land due to rocky geology in north-eastern portion of Bear Island Need for understanding of potentially contaminated sites on Bear Island Need for understanding of the soils and geology of the Lands Set Aside to identify future community and economic sites* 	<ul style="list-style-type: none"> Protect Temagami shoreline through the use of buffers and setbacks* Use stormwater management practices to minimize erosion and runoff into Lake Temagami Introduce climate change adaptation and mitigation measures through land use planning to limit the impacts of climate change Enhance the protection of vital wildlife habitats and plant medicine gathering areas Strengthen the preservation of existing trapping, hunting and fishing areas Preserve and promote the existing agricultural practices on Bear Island
<p>Traditional Land Use & Archaeology</p>	<ul style="list-style-type: none"> High likelihood of undocumented archaeology sites on Bear Island and the Lands Set Aside* 	<ul style="list-style-type: none"> Use appropriate buffers and setbacks to enhance the protection of key community areas, trails and routes Preserve heritage buildings such as St. Ursula's Church and sacred sites/grounds on Bear Island Ensure that new development has to complete the appropriate archaeological research to avoid disturbing valuable heritage sites
<p>Population, Employment, & Economic Development</p>	<ul style="list-style-type: none"> Community members opting to move off reserve, due to lack of employment opportunities, high school, and age-friendly facilities and services Limited availability of land and lack of reliable internet, capacity, critical mass, and isolated location may limit economic opportunities on Bear Island Lack of pre-existing infrastructure, capacity, critical mass, and isolated location may limit economic opportunities on the Lands Set Aside* Alignment of interests with the Municipality of Temagami and the Temagami Lakes Association 	<ul style="list-style-type: none"> Explore, foster and expand economic opportunities on Bear Island and the Lands Set Aside Introduce and expand tourism industry (canoeing, eco-tourism, trails, hiking, national parks) on Bear Island and the Lands Set Aside (e.g., Camp Wanapitei) Explore resource extraction (mining, minerals, fishing, agriculture, forestry) on the Lands Set Aside Capitalize on new, innovative and emerging industries in Northern Ontario, such as green technologies, clean energy generation for Indigenous communities and new resource demands (chromite, lithium, bio-products, etc.) Explore the islands on the Lands Set Aside for economic development opportunities

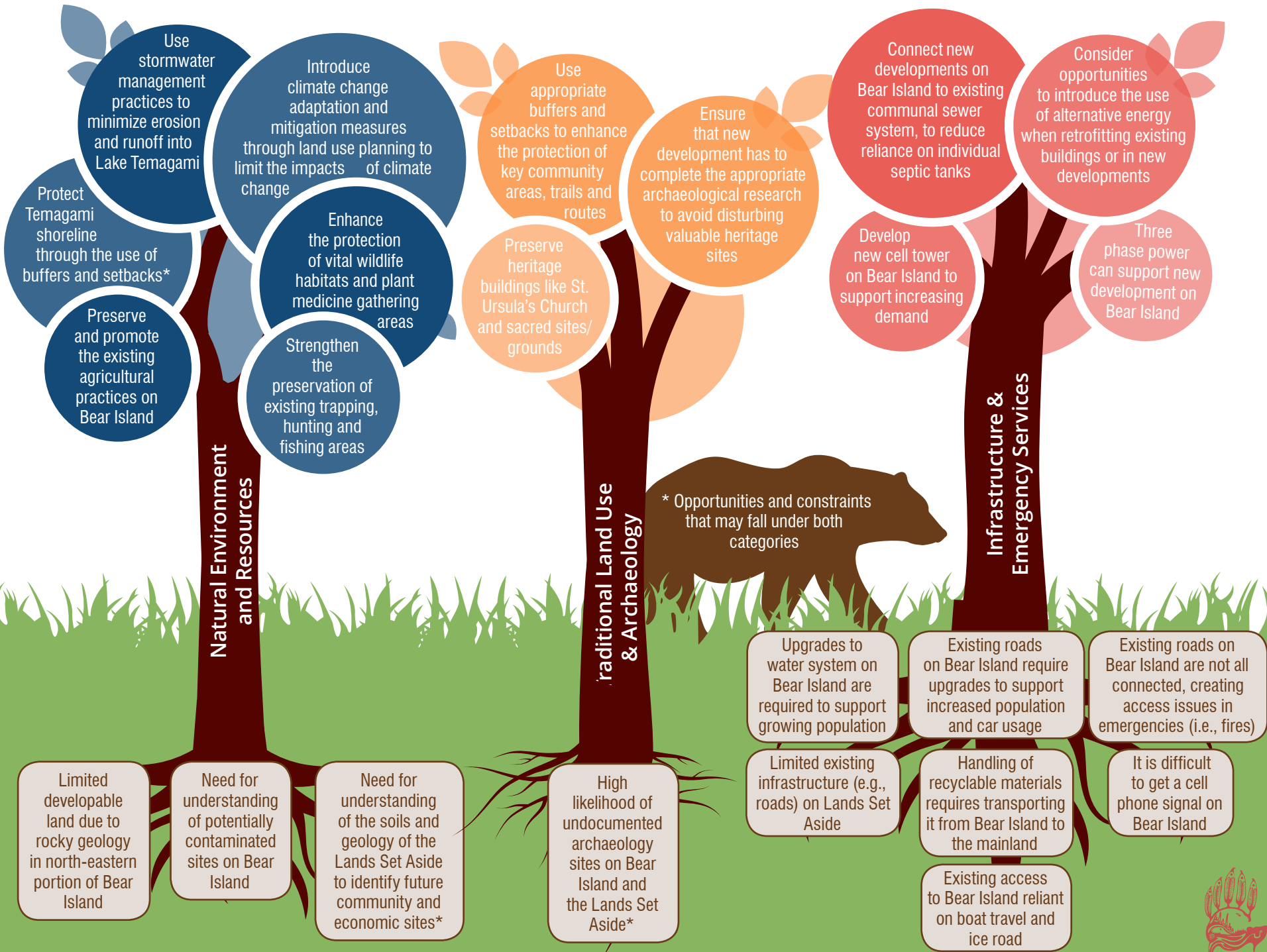
Theme	Constraints	Opportunities
Built Environment & Community Services	<ul style="list-style-type: none"> • Housing near the shore is preferred and the most sought after, whereas housing in-land on Bear Island is less desirable but somewhat more affordable than waterfront housing • A limited market on Bear Island can only support a small store, and most people shop in Temagami or North Bay so it is difficult to support a larger store with a wider range of products 	<ul style="list-style-type: none"> • Explore opportunities to repurpose existing buildings, or create multi-use facilities on Bear Island • Build community gathering places (e.g., arts centre and pow wow ground) • Create new, safe playing areas for children and improve existing areas • Consider an outdoor classroom on Bear Island and the Lands Set Aside to pass on traditional teachings • Provide stores for daily community needs in walkable locations for potential new settlement on the Lands Set Aside • Address the lack of housing by exploring suitable lands on Bear Island and the Lands Set Aside* • After the admin complex is complete, use the work camp housing to provide a viable housing option to those on Bear Island • Introduce alternative housing forms to create more affordable housing options (e.g., tiny homes, small apartment buildings)
Infrastructure & Emergency Services	<ul style="list-style-type: none"> • Upgrades to water system on Bear Island are required to support growing population • Existing access to Bear Island reliant on boat travel and ice road • Existing roads on Bear Island require upgrades to support increased population and car usage • It is difficult to get a cell phone signal on Bear Island • Existing roads on Bear Island are not all connected, creating access issues in emergencies (i.e., fires) • Handling of recyclable materials requires transporting it from Bear Island to the mainland • Limited existing infrastructure (e.g., roads) on Lands Set Aside 	<ul style="list-style-type: none"> • Connect new developments on Bear Island to existing communal sewer system, to reduce reliance on individual septic tanks • Develop new cell tower on Bear Island to support increasing demand • Three phase power can support new development on Bear Island • Consider opportunities to introduce the use of alternative energy when retrofitting existing buildings or in new developments

* Opportunities and constraints that may fall under both categories

Temagami First Nation: Land Use Opportunities and Constraints

Opportunities

Constraints



Temagami First Nation: Land Use Opportunities and Constraints

Opportunities



The success of economic development opportunities on the Lands Set Aside will depend on the type of industry and the location of the industry.

Constraints

