



FOREST FIRE

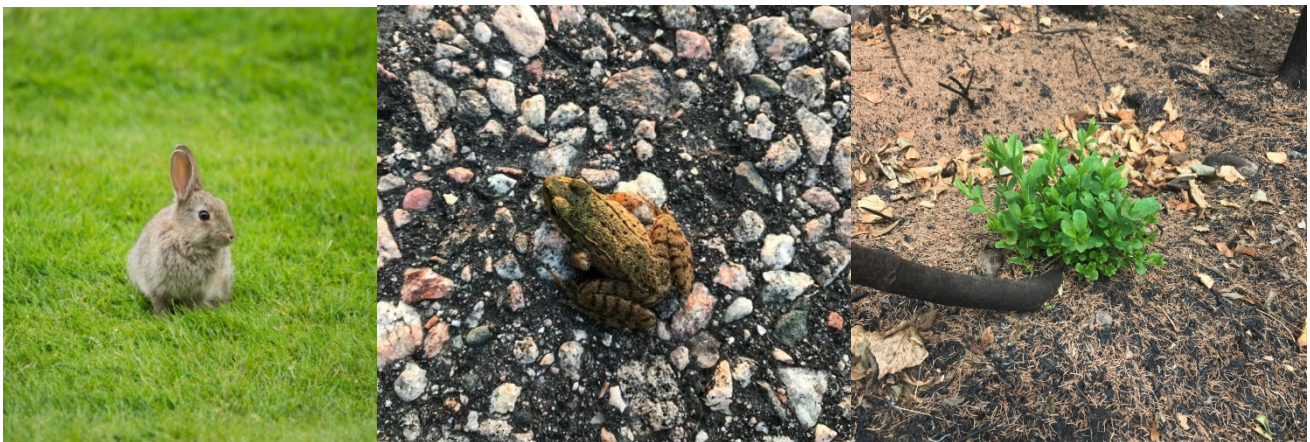
News July 26, 2018 – 20:30

River Valley Cluster Fire Update

The River Valley cluster is being managed by the Rick Moore Incident Management Team (IMT) from Alberta. This cluster includes two fires; North Bay 62 and North Bay 42. Both fires are BEING HELD. The IMT is monitoring North Bay 25 which is now under control.

There are 154 people working on these fires including fire fighters from Ontario, British Columbia, Alberta, Saskatchewan, Nova Scotia and Mexico.

Firefighters have seen rabbits, frogs, turtles, moose, bears and more on the fireline. There is no photographic evidence of the turtle, moose or the bears! Green grass and plants are already starting to come back in the burned areas.



North Bay 42:

- Location: North of Red Cedar Lake
- Size: 350 Hectares
- Status: Being Held

North Bay 62:

- Location: Southwest of Hand Lake
- Size: 2,500 Hectares
- Status: Being Held

Crews took advantage of the cooler, dry day to make solid progress on all fires. On fire 42, crews continued to secure the perimeter on the northern side and work on hot spots on the west side. For fire 62, crews continued to work the perimeter of the fire while some crews began to recover equipment from the fire.

Crews completed removal of sprinkler protection from all structures.

The IMT continues to monitor NOR 025, west of the cluster, which is about 200 hectares. This fire is now UNDER CONTROL. Three hotspots on Fire 25 were identified that will be actioned by firefighters tomorrow.



Friday's Forecast

Mostly cloudy with scattered showers expected for tomorrow; heavy rain with a chance of lightning tomorrow in the late afternoon. Tomorrow's temperature is expected to be 20 degrees, humidity of 60%, and winds SW 16km/h gusting to 25-30 km/h.

Unsettled weather with continue on Saturday with showers and thunderstorms possible.

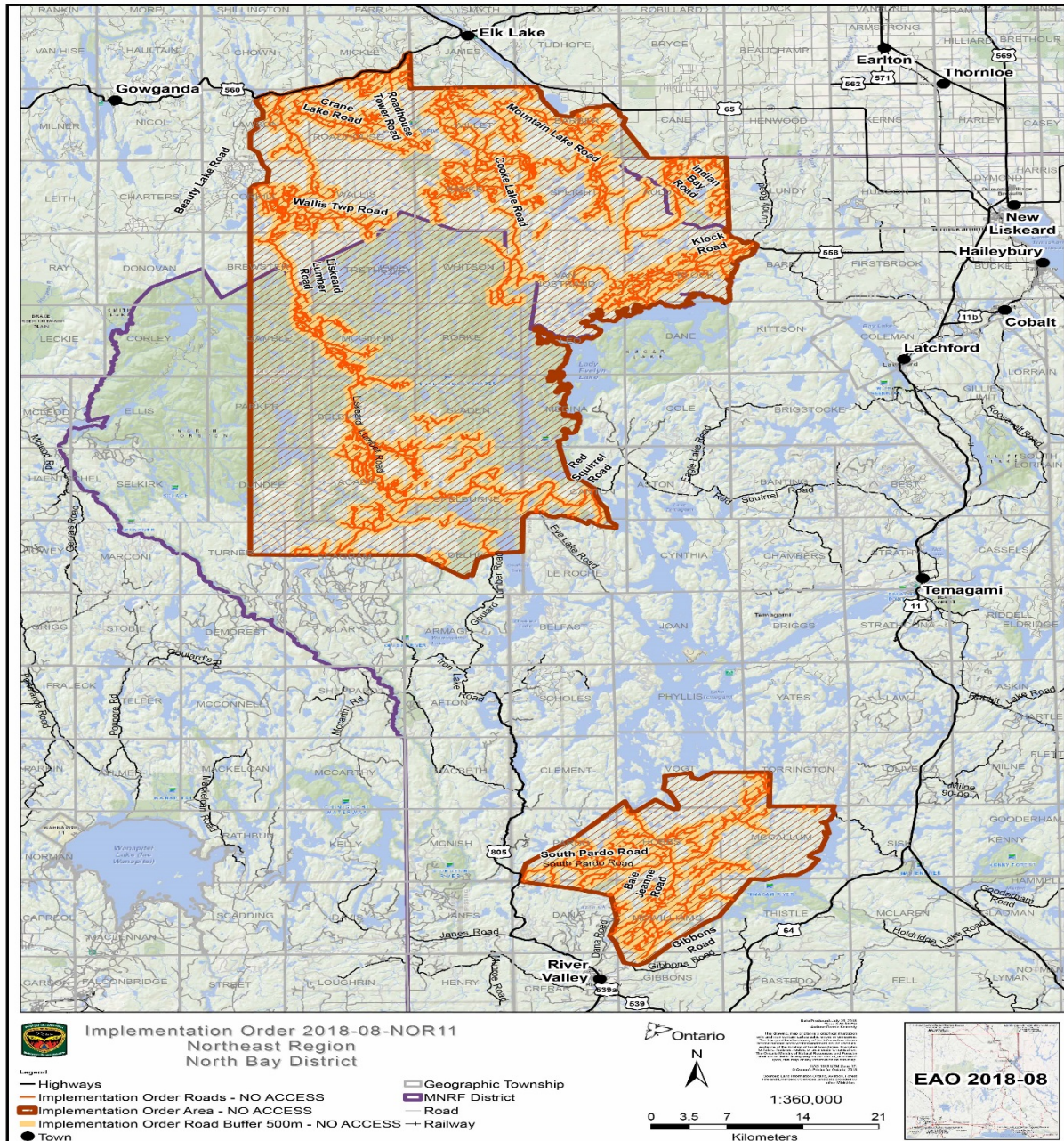
Note: SW winds are bringing smoke from other wildfires into the River Valley area. There are no new wildfires in this area.



Battling a flare up on Fire 42 earlier today.

Travel Restrictions

The Ministry of Natural Resources and Forestry is prohibiting access in portions of North Bay, Sudbury and Kirkland Lake Districts where there are public safety hazards resulting from increased fire activity. Crown land camping, boating, day-tripping, hiking, ATViing as well as accessing private or commercial camps or cottages are not permitted in the area covered by the travel restrictions. **For inquiries about the travel restrictions, please call: 705-475-5546**



Restricted Fire Zone

A Restricted Fire Zone remains in effect.

When a Restricted Fire Zone is declared, it is illegal to set a fire within the affected area. Failure to comply could result in a fine of up to \$25,000 and three months in jail, as well as the financial responsibility for any costs incurred in fighting a forest fire caused by the illegal act.

If you need heat for cooking and warmth, you must use a portable gas or propane stove. Portable charcoal equipment (ex. BBQs, Hibachis, etc) are illegal for use during a Restricted Fire Zone, except close to a dwelling you legally own or occupy or in an organized campground.

Visit <https://www.ontario.ca/page/outdoor-fire-restrictions> for more information.

Smoke Concerns

Many Ontario residents have reported smoke drift in their communities. Smokey conditions are expected to continue when fires are active until weather patterns change.

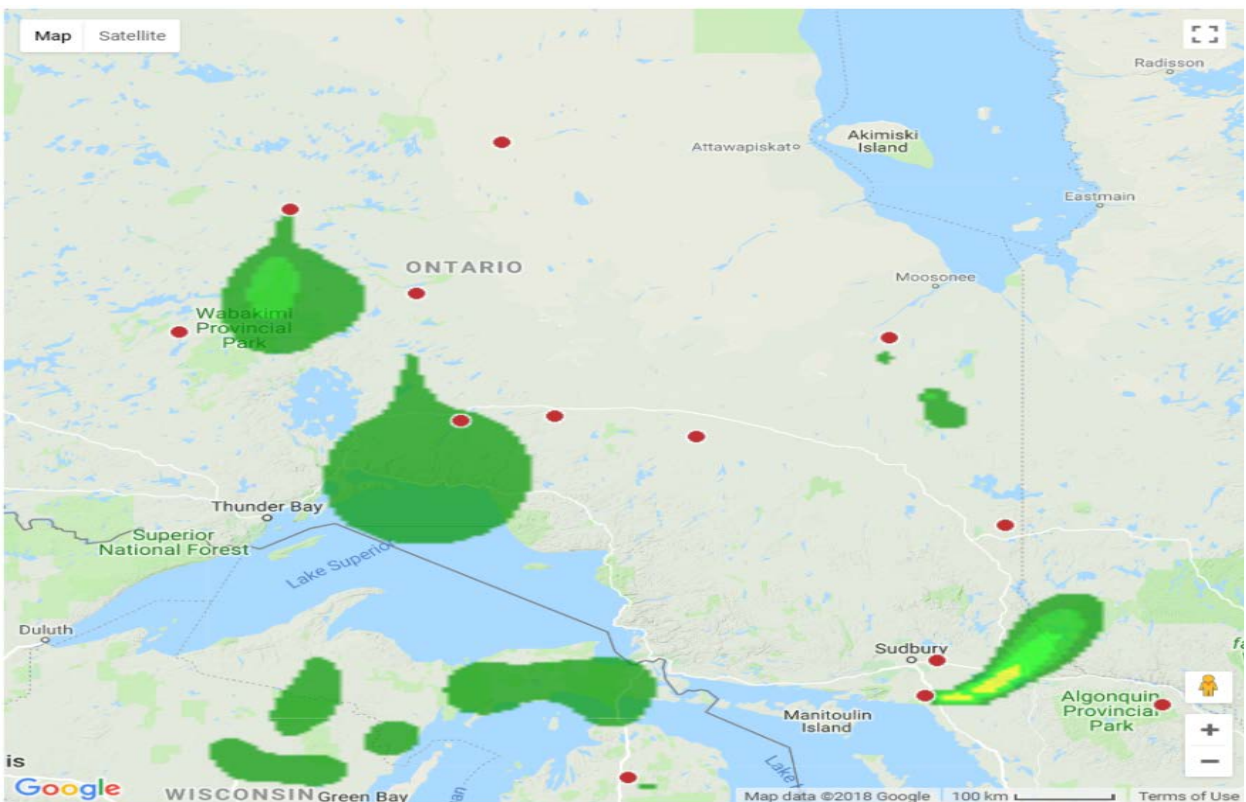
We would like to remind the public that if they do see flames or smoke, please report it by calling 310-FIRE. Stay away from the area for public safety.

If you have questions or concerns about smoke and your health, please contact TeleHealth Ontario at 1-866-797-0000

Did You Know?

- Smoke drift from recent large fires in the Northeast Region has been affecting many parts of northeastern Ontario. Hazy smoky skies are expected to be seen as the fires continue to burn. Here are some interesting facts about smoke drift.
- Around the world, ash and thick smoke from wildfires can fill the skies.
- While the smoke seems to disappear with distance from the fires, polluting gases and small particles that are invisible to the human eye can be carried away by global air currents.
- Over the past decade, satellite data helped reveal that pollution transport often occurs over hundreds and even thousands of miles, and long-distance transport has received increased attention due to the potential impact on the air quality of continents downwind.
- Smoke from extremely hot wildfires can rise 4 to 5 miles (7 to 8 kilometers) into the atmosphere, and can be carried even further with the fast winds at higher altitudes.
- The hotter the fire, the higher its smoke can go — and the higher the smoke goes into the atmosphere, the farther it typically travels. The winds are much stronger in the upper atmosphere there, so it gets transported much quicker.

Smoke drift models, like the picture below, are useful tools in predicting where smoke drift will occur over a given period. This can be used to help inform communities about potential smoke drift into their area. This smoke drift prediction tool can be found at <http://firesmoke.ca>.



Contact Numbers and Online Information

For more information about travel restrictions in the areas of the Lake Temagami/Lady Evelyn or River Valley Clusters: 705-475-5546

For general information about the fire situation: 705-564-6165

For information about highway closures: 5-1-1

For inquiries regarding Ontario Parks closures and updates:

- Finalyson Point (including lady Evelyn-Smoothwater, Obabika River, Makobe-Grays, Solace and Sturgeon River): 705-569-3205
- Marten River: 705-892-2200

If you'd like to receive this newsletter daily, please send your email address to affes.communications@ontario.ca.



FOLLOW: @ONforestfires @ONfeudeforet



WEB: ontario.ca/forestfire ontario.ca/incendiedeforet



CALL: Fire Updates 1-705-564-6165 Travel Updates 705-475-5546