



FOREST FIRE

News July 28, 2018 – 20:30

River Valley Cluster Fire Update

The River Valley cluster is being managed by the Rick Moore Incident Management team from Alberta. This cluster includes two fires. North Bay 62 was declared UNDER CONTROL this morning, North Bay 42 is BEING HELD. We are monitoring North Bay 25 which remains under control.

There are 136 people working on these fires including fire fighters from Ontario, British Columbia, Alberta, Saskatchewan, Nova Scotia and Mexico.



Above: Convoy of campers, with Forestry Escort, removing their trailers and other valuables from behind the fire line today.

North Bay 42:

- Location: North of Red Cedar Lake
- Size: 350 Hectares
- Status: Being Held

North Bay 62:

- Location: Southwest of Hand Lake
- Size: 2,500 Hectares
- Status: Being Held

Crews made solid progress on all fires today. Fire 62 was deemed UNDER CONTROL this morning. Crews worked to remove gear from the fire. On fire 42, crews worked on the north side today. Crews worked to remove gear from the south side of this wildfire.



NOR 025 is under UNDER CONTROL. All gear has been removed from this wildfire.



Sunday's Forecast

Scattered cloud with isolated rain showers and thunderstorms possible in the afternoon. We're expecting a high of 26 degrees, humidity of 30-40%, winds W 10-15 km/hr.

Another nice day is expected on Monday with unsettled conditions returning by Wednesday.

Note: SW winds are bringing smoke from other wildfires into the River Valley area. There are no new wildfires in this area.

Did You Know?

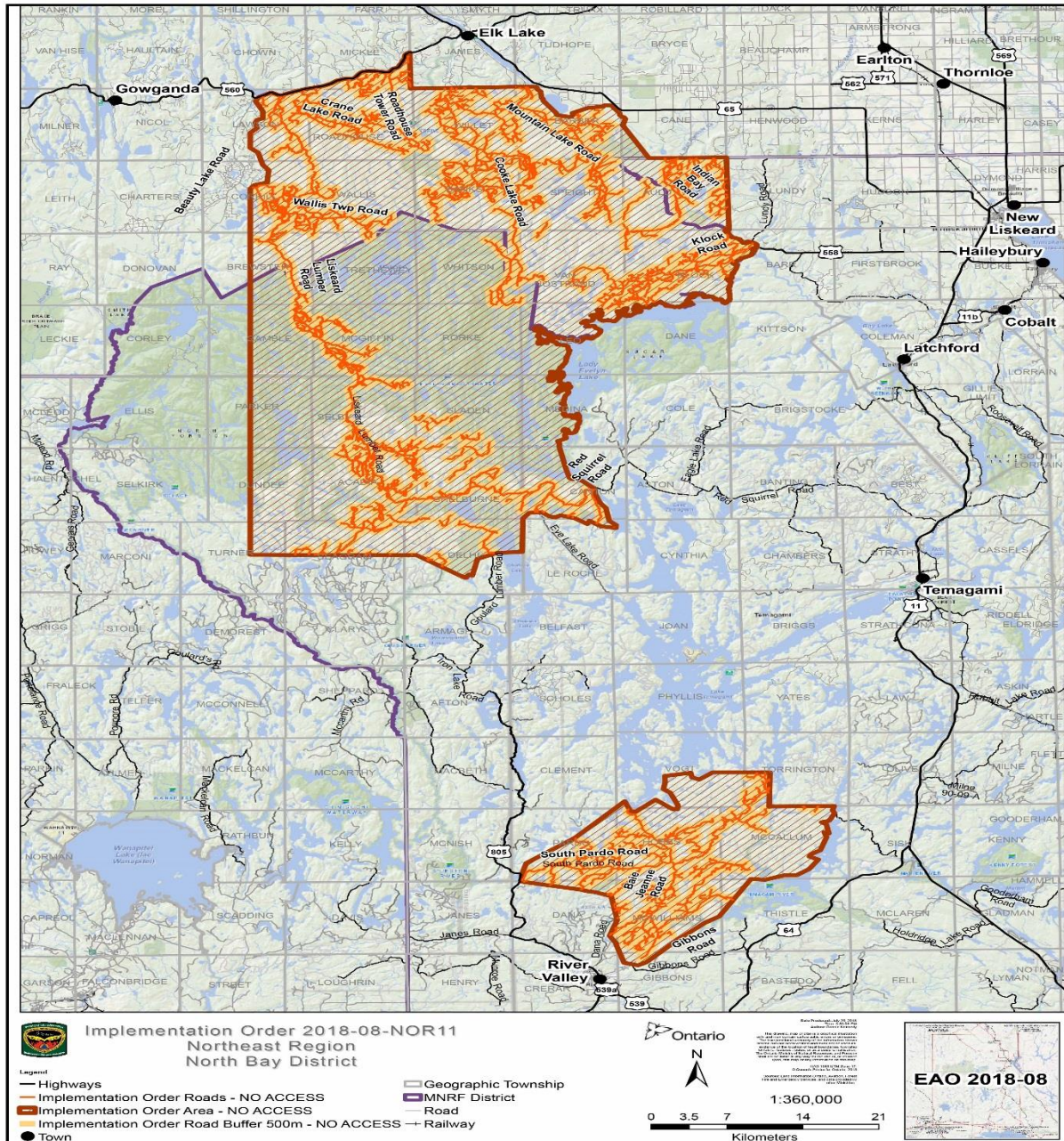
It's the job of fire managers to first assess which fires pose a threat to human safety, property and public assets (including homes, businesses, utility corridors, wildlife and merchantable timber) and then to decide what fire-fighting resources are needed and where. In making such decisions, these managers use both their personal experience and information provided by the Canadian Forest Fire Danger Rating System (CFFDRS).

The CFFDRS is the principal source of fire intelligence for all forest fire management agencies in Canada. It is also the most widely applied fire danger rating system in the world. Components of the CFFDRS are used to determine the Fire Danger Rating on a daily basis. The chart below explains the different levels of fire hazard.

Status	Description
Low	Fires likely to be self-extinguishing and new ignitions unlikely. Any existing fires limited to smoldering in deep, drier layers.
Moderate	Creeping or gentle surface fires. Fires easily contained by ground crews with pumps and hand tools.
High	Moderate to vigorous surface fire with intermittent crown involvement. Challenging for ground crews to handle; heavy equipment (bulldozers, tanker trucks, aircraft) often required to contain fire.
Very High	High-intensity fire with partial to full crown involvement. Head fire conditions beyond the ability of ground crews; air attack with retardant required to effectively attack fire's head.
Extreme	Fast-spreading, high-intensity crown fire. Very difficult to control. Suppression actions limited to flanks, with only indirect actions possible against the fire's head.
Nil	No calculations were performed for this region.

Travel Restrictions

The Ministry of Natural Resources and Forestry is prohibiting access in portions of North Bay, Sudbury and Kirkland Lake Districts where there are public safety hazards resulting from increased fire activity. Crown land camping, boating, day-tripping, hiking, ATViing as well as accessing private or commercial camps or cottages are not permitted in the area covered by the travel restrictions. **For inquiries about the travel restrictions, please call: 705-475-5546**



Restricted Fire Zone

A Restricted Fire Zone remains in effect.

When a Restricted Fire Zone is declared, it is illegal to set a fire within the affected area. Failure to comply could result in a fine of up to \$25,000 and three months in jail, as well as the financial responsibility for any costs incurred in fighting a forest fire caused by the illegal act.

If you need heat for cooking and warmth, you must use a portable gas or propane stove. Portable charcoal equipment (ex. BBQs, Hibachis, etc) are illegal for use during a Restricted Fire Zone, except close to a dwelling you legally own or occupy or in an organized campground.

Visit <https://www.ontario.ca/page/outdoor-fire-restrictions> for more information.

Smoke Concerns

Many Ontario residents have reported smoke drift in their communities. Smokey conditions are expected to continue when fires are active until weather patterns change.

We would like to remind the public that if they do see flames or smoke, please report it by calling 310-FIRE. Stay away from the area for public safety.

If you have questions or concerns about smoke and your health, please contact TeleHealth Ontario at 1-866-797-0000

Contact Numbers and Online Information

For more information about travel restrictions:

- North Bay MNRF 705-475-5546.
- Kirkland Lake MNRF 705-568-3201.

For general information about the fire situation: 705-564-6165

For information about highway closures: 5-1-1

For inquiries regarding Ontario Parks closures and updates:

- Finlayson Point (including Lady Evelyn-Smoothwater, Obabika River, Makobe-Grays, Solace and Sturgeon River): 705-569-3205
- Marten River: 705-892-2200



FOLLOW: @ONforestfires @ONfeudeforet



WEB: ontario.ca/forestfire ontario.ca/incendiedeforet



CALL: Fire Updates 1-705-564-6165 Travel Updates 705-475-5546