



FOREST FIRE

News July 18, 2018

River Valley Cluster Fire Update

The River Valley cluster is being managed by the Rick Moore Incident Management team from Alberta, who assumed responsibility for the fire earlier today. This cluster includes two fires, North Bay 62 and North Bay 42. North Bay 45 was called out yesterday.

North Bay 42:

- Location: North of Red Cedar Lake
- Size: 350 Hectares
- Status: Not Under Control

Crews have been making steady progress on the south and west sides of this fire. Today crews also focused on the north side of the fire. Some smoke was visible this afternoon as winds picked up.

North Bay 62:

- Location: Southwest of Hand Lake
- Size: 2,500 Hectares
- Status: not under control

Crews were working on the south and west sides of the fire today, with a plan to work on the east side tomorrow, conditions permitting.

There was one new wildfire start today, northwest of fire 062. Air and ground crews were quick to action this fire which is about 2 hectares. We will have more information on the status of this fire tomorrow.



Wednesday's Forecast

Sunny and clear conditions are expected tomorrow with a high of 27 degrees, humidity of 35-40%, and light winds from the south/southwest at 15-20 km/hr. In the afternoon, during peak burn, winds are expected to increase, gusting 30-35 km/hr before easing into the evening. We are not expecting any precipitation on this fire.

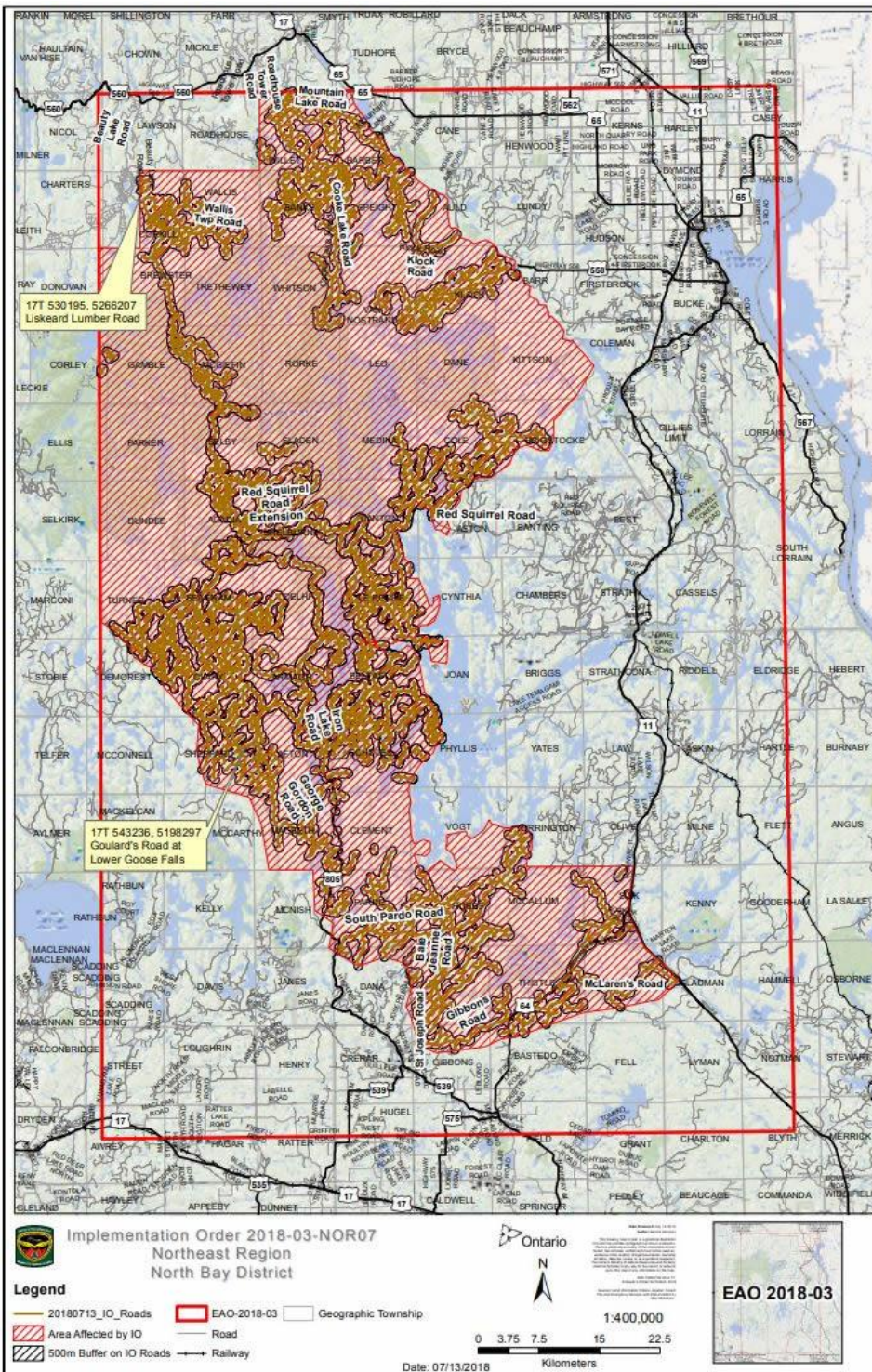


Initial Attack crew 2217 from Sudbury helping out at the staging area.

Helicopters with buckets like the one shown below, have been dropping water on hotspots and supporting the work done by ground crews.



Travel Restrictions



The Ministry of Natural Resources and Forestry is prohibiting access in portions of North Bay, Sudbury and Kirkland Lake Districts where there are public safety hazards as a result of increased fire activity. Crown land camping, boating, day-tripping, hiking, ATving as well as accessing private or commercial camps or cottages are not permitted in the area covered by the travel restrictions.

For inquiries about the travel restrictions, please call: 705-475-5546.

Smoke Concerns

Many Ontario residents have reported smoke drift in their communities. Smokey conditions are expected to continue when fires are active until weather patterns change.

We would like to remind the public that if they do see flames or smoke, please report it. Stay away from the area for public safety.

If you have questions or concerns about smoke and your health, please contact TeleHealth Ontario at 1-866-797-0000.

Restricted Fire Zone

A Fire Restriction remains in effect.

When a Restricted Fire Zone is declared, it is illegal to set a fire within the affected area. Failure to comply could result in a fine of up to \$25,000 and three months in jail, as well as the financial responsibility for any costs incurred in fighting a forest fire caused by the illegal act.

If you need heat for cooking and warmth, you must use a portable gas or propane stove. Portable charcoal equipment (ex. BBQs, Hibachis, etc) are illegal for use during a Restricted Fire Zone, except close to a dwelling you legally own or occupy or in an organized campground.

Visit <https://www.ontario.ca/page/outdoor-fire-restrictions> for more information.



Aviation, Forest Fire and
Emergency Services

Services d'urgence, d'aviation et de
lutte contre les feux de forêt

What You Should Know About Restricted Fire Zones



**It's important! And it's
the law!**

A Restricted Fire Zone is a specific geographic area where the use of open fires, like campfires or debris burning, is restricted.

It is a temporary measure put in place by the Minister of Natural Resources and Forestry when the fire danger is extreme to prevent human caused fires. A Restricted Fire Zone order may last from a few days to weeks depending on conditions. The restrictions are lifted as soon as conditions allow.

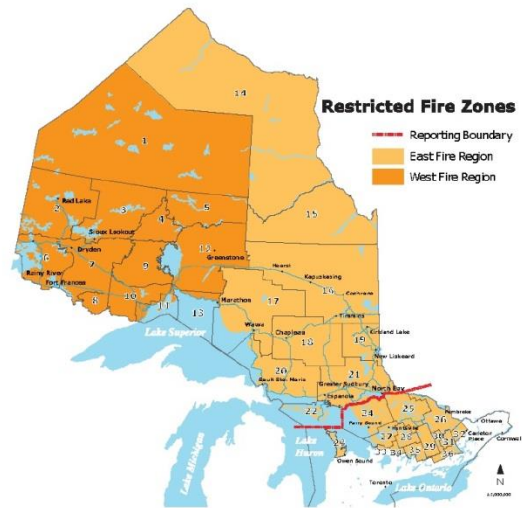
When a Restricted Fire Zone is declared, it is illegal to set a fire within the affected area. Failure to comply could result in a fine of up to \$25,000 and three months in jail, as well as the financial responsibility for any costs incurred in fighting a forest fire caused by the illegal act.

You can still go camping, hiking, fishing, and have fun outdoors, but if you need heat for cooking and warmth, you'll have to use a portable gas or propane stove.

Portable charcoal equipment (e.g., BBQs, Hibachis, etc.) are illegal for use during a Restricted Fire Zone except close to a dwelling that you legally own or occupy or in an organized campground.

Commercial campground operators may allow their guests to continue enjoying campfires during a Restricted Fire Zone period provided certain conditions are met.

For more information, visit:
ontario.ca/forestfire.



How will I know if I'm in a Restricted Fire Zone?

The Ministry of Natural Resources and Forestry posts highly visible green and red Restricted Fire Zone signs along roadways. Restricted Fire Zone posters are posted at popular camping spots, and in sport lodges, gas stations, and stores.

Advisories are issued to radio, television, print media and the internet, indicating the specific areas affected using the Zone numbers on the Restricted Fire Zone map.

For more information on **Restricted Fire Zones** please call your local Ministry of Natural Resources and Forestry office.

For areas below the --- line on the map call your local Municipal Fire Department.

**To report a wildfire in northern Ontario, call
310-FIRE (3473).**



Did You Know?

Fire condition is described using the Intensity Class system. There are 6 classifications for wildfires. As fire's behaviour increases so does the intensity.

Intensity Class 1

Very little if any visible open flame; smouldering.

Intensity Class 2

Low vigour surface fire. Some open flame, not very active or creeping.

Intensity Class 3

Moderately vigorous surface fire. Single tree may torch.

Intensity Class 4

Highly vigorous surface fire with single tree or clumps of trees torching.

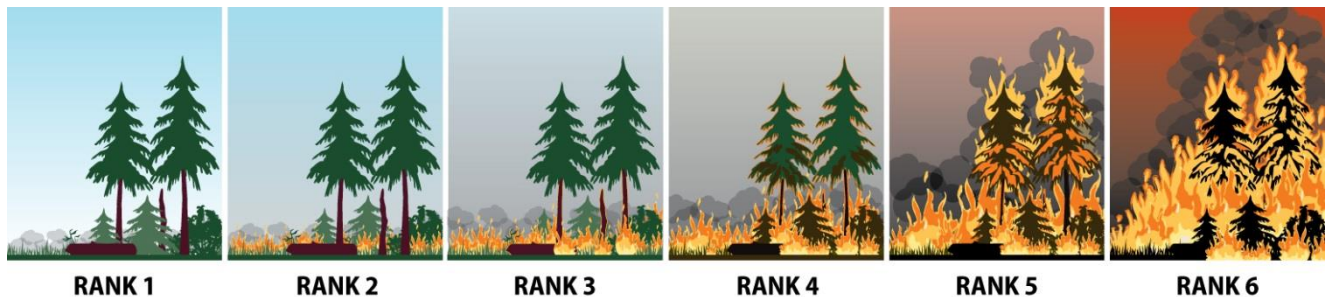
Intensity Class 5/6

Extremely vigorous surface fire or active crown fire. Major fire runs are probable.

Fire Size

Hectares (ha) are the unit of measurement used by the MNRFB for fire size description.

1 football field = approximately 1 ha.



(Picture Credit: <https://www2.gov.bc.ca/gov/content/safety/wildfire-status/about-bcws/wildfire-response/fire-characteristics/rank>)

Contact Numbers and Online Information

For more information about travel restrictions: 705-475-5546

For general information about the fire situation: 705-564-6165

For information about highway closures: 5-1-1

For inquiries regarding Ontario Parks closures and updates:

- Finalyson Point (including lady Evelyn-Smoothwater, Obabika River, Makobe-Grays, Solace and Sturgeon River): 705-569-3205
- Marten River: 705-892-2200



FOLLOW: @ONforestfires @ONfeudeforet



WEB: ontario.ca/forestfire ontario.ca/incendiedeforet



CALL: Fire Updates 1-705-564-6165 Travel Updates 705-475-5546