



# FOREST FIRE

News - July 29, 2018 - 22:00

---

---

## Lady Evelyn Park Cluster Fire Update

The Lady Evelyn Park Cluster continues to be managed by the Bob Hurley Incident Management Team (IMT) from Ontario.

MNRF staff have remapped North Bay Fire 072 and adjusted the overall size from 27,569 hectares to 27,275 hectares, that's a decrease of 304 hectares. By flying at a low level when there is very little smoke, staff are better able to see the edge of the fire and map it more accurately.

100 Mexican firefighters arrived in the evening of July 29, 2018 at the Lady Evelyn Park Cluster Incident Command Post at the Earlton Airport. These firefighters will work on North Bay Fire 072 along with crews from the Ontario, Northwest Territories and Alberta.



Above: Mexican Firefighters arriving at the Incident Command Post.

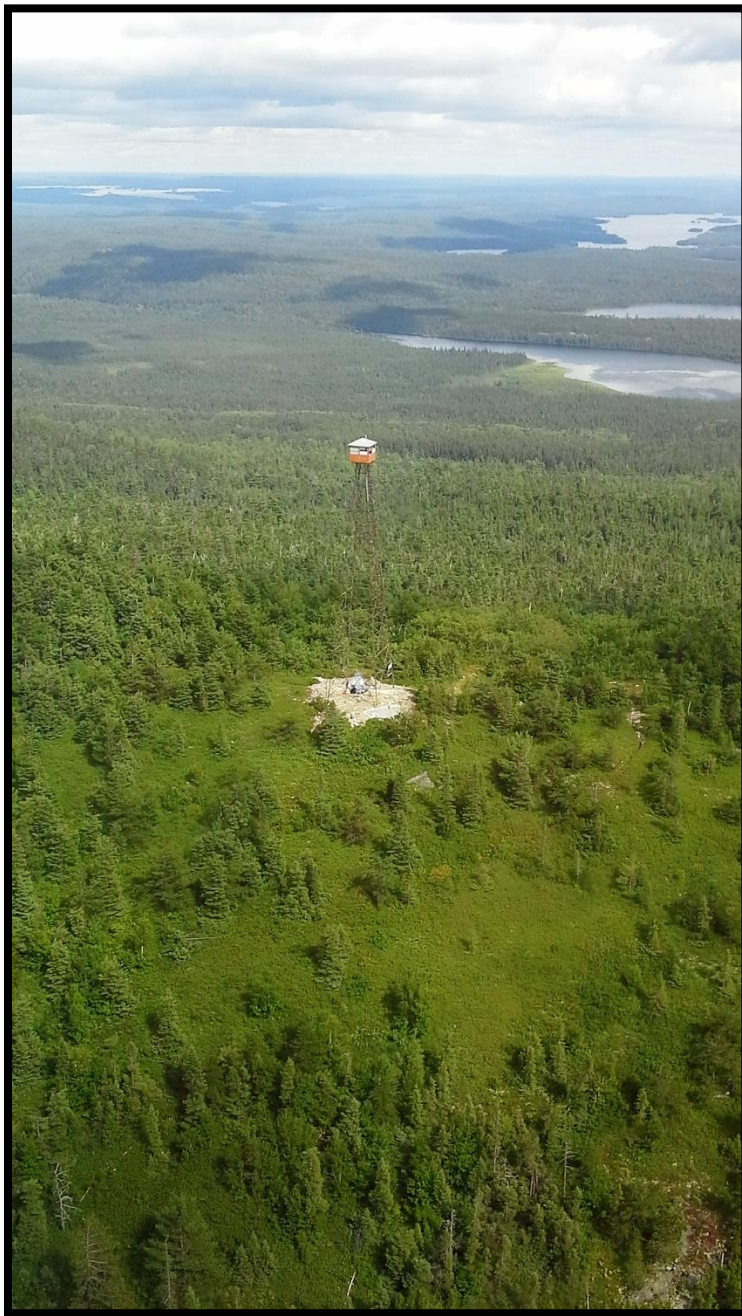
## Forecast and weather information

---



### Monday's Forecast

Monday, July 29, 2018 will be a warm and sunny day with Relative Humidity values in the mid-40's. We expect to see the wind start to come out of the south. Over the next few days we expect to see a bit more activity on area fires with this change to nicer weather. It's possible we will start to see and smell smoke in the air.



**Left photo:** This is the Maple Mountain Fire Tower located in Lady Evelyn-Smoothwater Provincial Park. It is within the boundary of North Bay Fire 072. What a breath taking view!



**Above photo:** this picture was taken on July 28, 2018 and shows the different burn patterns of North Bay Fire 072. Some areas are very dark where the fire burned really hot, while other areas are light beige or even green where the fire was not as hot.

# Travel Restrictions

The Ministry of Natural Resources and Forestry is advising the public that due to continued active forest fire activity in the River Valley, Elk Lake and Lady Evelyn area, an Implementation Order is in effect that restricts access to certain roads, parks and Crown lands. Access to these areas is restricted and road blocks have been set up to notify the public of the closures. Within the area, Crown land camping, boating, the landing of float planes, day-tripping, hiking, ATVing as well as accessing private or commercial camps and cottages are NOT permitted. Permits are required to travel through the restricted area.

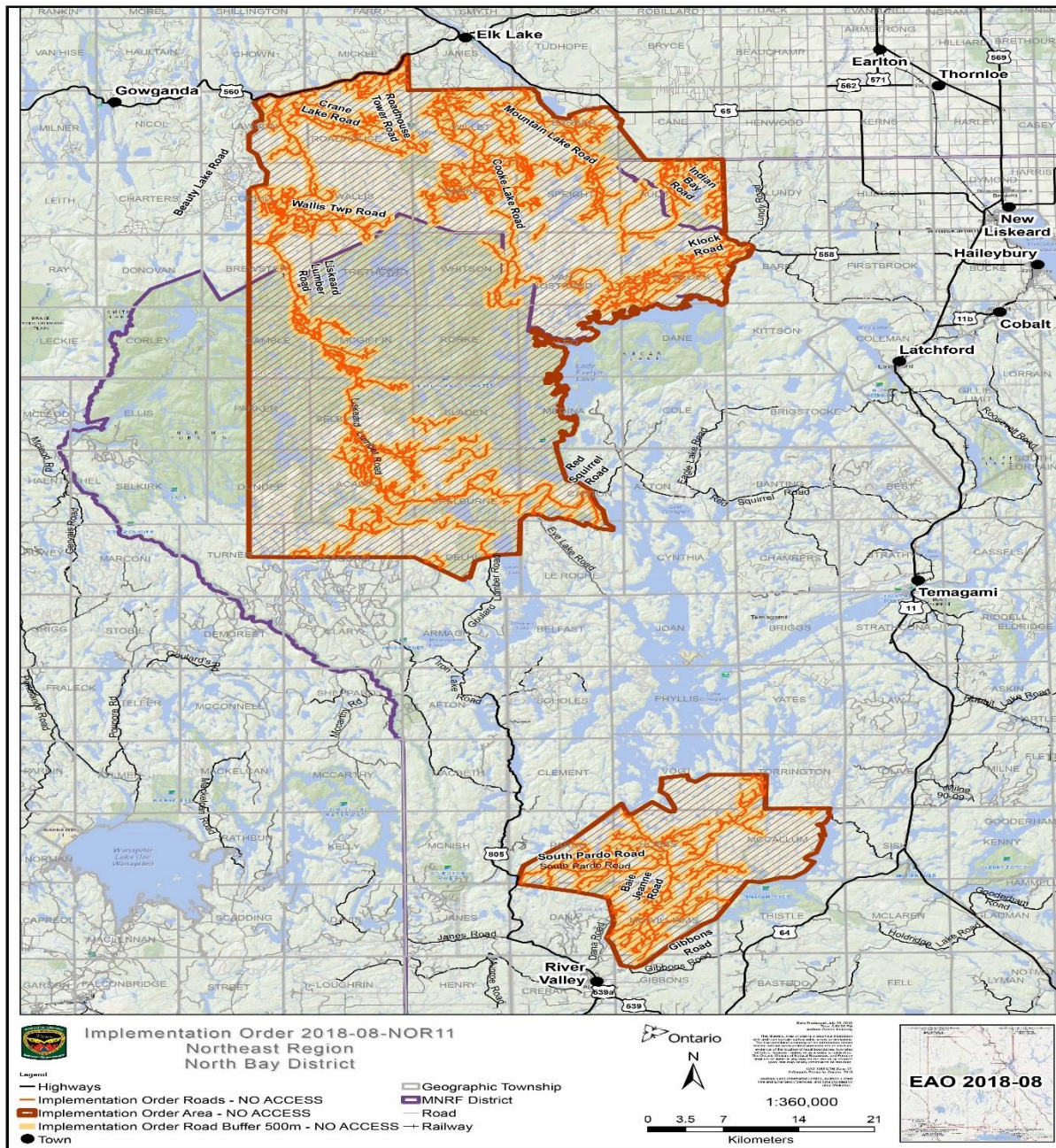
Please visit [Ontario.ca/forestfire](http://Ontario.ca/forestfire) to view the current restrictions and for more information on how to

obtain a permit.

**For inquiries about the travel restrictions, please call:**

North Bay - 705-475-5546

Kirkland Lake- 705-568-3201



## Restricted Fire Zone

A Fire Restriction remains in effect.

When a Restricted Fire Zone is declared, it is illegal to set a fire within the affected area. Failure to comply could result in a fine of up to \$25,000 and three months in jail, as well as the financial responsibility for any costs incurred in fighting a forest fire caused by the illegal act.

If you need heat for cooking and warmth, you must use a portable gas or propane stove. Portable charcoal equipment (ex. BBQs, Hibachis, etc) are illegal for use during a Restricted Fire Zone, except close to a dwelling you legally own or occupy or in an organized campground.

Visit <https://www.ontario.ca/page/outdoor-fire-restrictions> for more information.

## Smoke Concerns

Many Ontario residents have reported smoke drift in their communities. Smokey conditions are expected to continue when fires are active until weather patterns change.

We would like to remind the public that if they do see flames or smoke, please report it. Stay away from the area for public safety.

If you have questions or concerns about smoke and your health, please contact TeleHealth Ontario at 1-866-797-0000.

Between July 1 and July 28, 2018 there were 230,000 lightning strikes in Ontario. Some of those lightning strikes ignited forest fires in the North East region.

## Did you know?

- ⚡ Forest fires caused by lightning may not be detected for days or weeks. These fires are called “holdover fires”.
- ⚡ There are different reasons why a fire may not be discovered right away. For instance, creeping fires often burn slowly through a tree, possibly even spreading into the root system before becoming a full-blown wildfire. Rainfall or high humidity may also keep a fire smoldering.
- ⚡ The smoke from a fire may only be visible once it begins to rise above the tree tops on a sunny day. High humidity may also keep the smoke closer to the ground.
- ⚡ Lightning is an electrical current mostly caused by warm air mixing with cold air masses during a thunderstorm. However, lightning can also be caused by dust storms, forest fires and volcanic eruptions.
- ⚡ There are three types of lightning: lightning that occurs within a cloud, lightning that occurs between two clouds, or lightning that occurs between a cloud and the ground. Cloud-to-ground lightning is the most dangerous and damaging form of lightning because it strikes physical objects (for example, trees and buildings); but lightning inside a cloud or between clouds are the most common types of lightning. For every cloud-to-ground strike, there can be three to five cloud-to-cloud strikes. ([www.canada.ca/en/environment-climate-change](http://www.canada.ca/en/environment-climate-change))
- ⚡ Thunder is caused by lightning. The reason we see lightning before we hear thunder is because light travels faster than sound.
- ⚡ The science of lightning is called *fulminology*, and the fear of lightning is called *astraphobia*.



Photo taken by Pilot Ken Irvine at the Sudbury Fire Management Centre, July 2018

## Contact Numbers and Online Information

For more information about travel restrictions:

- North Bay MNRF 705-475-5546.
- Kirkland Lake MNRF 705-568-3201.

For general information about the fire situation: 705-564-6165

For information about highway closures: 5-1-1

For inquiries regarding Ontario Parks closures and updates:

- Finlayson Point (including Lady Evelyn-Smoothwater, Obabika River, Makobe-Grays, Solace and Sturgeon River): 705-569-3205
- Marten River: 705-892-2200



**FOLLOW:** @ONforestfires @ONfeudeforet



**WEB:** [ontario.ca/forestfire](http://ontario.ca/forestfire) [ontario.ca/incendiedeforet](http://ontario.ca/incendiedeforet)



**CALL:** Fire Updates 1-705-564-6165 Travel Updates 705-475-5546