



FOREST FIRE

News - July 28, 2018 - 22:00

Lady Evelyn Park Cluster Fire Update

The Ministry of Natural Resources and Forestry (MNRF) reminds the public that there is currently a Restricted Fire Zone in place for much of northeastern Ontario. There are 2 reasons why a Restricted Fire Zone is in effect:



1. When outdoor conditions are extremely dry
2. The number of fires occurring has stretched firefighting resources to capacity

A Restricted Fire Zone is a temporary measure for extreme situations. As soon as outdoor conditions permit, the restrictions are lifted.

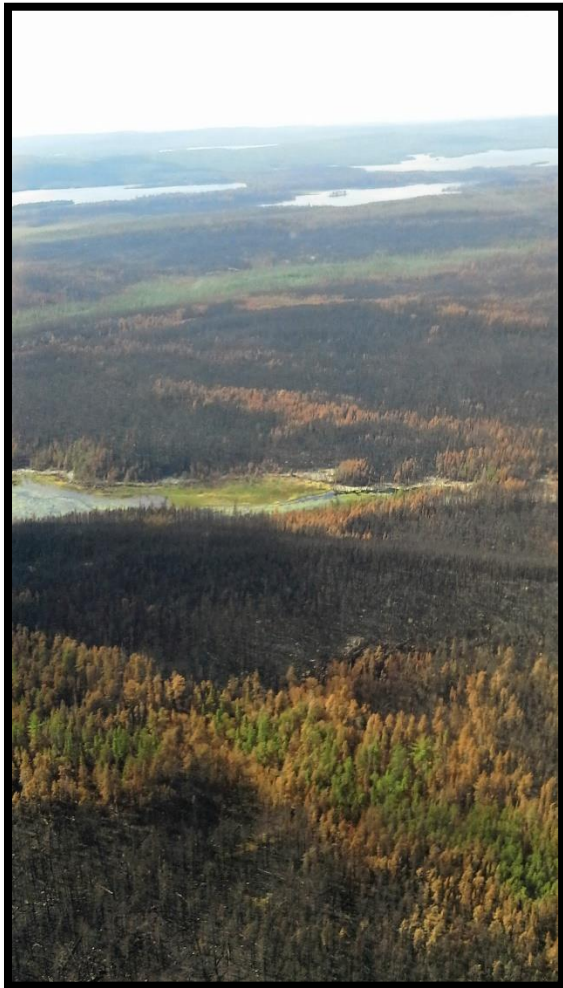
In addition to the Restricted Fire Zone, an Implementation Order remains in place prohibiting access and travel in portions of North Bay, Kirkland Lake and Sudbury Districts where there are public safety hazards as a result of current fire activity. This order came into effect as of 1800 hours EST on July 25, 2018 and will remain in place until it is revoked.

The MNRF truly appreciates the public's ongoing cooperation and support during this busy time. We assure you that these measures are for your safety as well as for the safety of the FireRangers working on the front line.

The Lady Evelyn Park Cluster continues to be managed by the Bob Hurley Incident Management Team (IMT) from Ontario. This cluster includes North Bay Fires 18, 19, 46, 59, 61.

North Bay 72

- North Bay Fire 072 remains at 27,579 hectares and is listed as not under control.
- Staff were remapping the fire from the sky today.
- A little bit of smoke was observed on the fire later in the afternoon and we anticipate that will increase over the next few days as the weather returns to seasonal values with temperatures reaching the mid to high 20's.
- We are expecting 100 Mexican FireRangers to arrive on July 29, 2018 which will bring the total number of staff assigned to this cluster close to 300.
- 12 pieces of heavy equipment are assigned to this fire (i.e. feller-bunchers, dozers, skidders, excavators). More will be hired as needed.
- There are 11 helicopters assigned to this cluster.



Left Photo: Picture was taken the afternoon of July 28, 2018. You can see that the fire burned rapidly in some areas which are now black, while leaving other areas of the forest untouched.



Above photo: Excellent photo showing how some parts of the forest burn effortlessly while the green areas have remained untouched by the fire.

Forecast and weather information



Sunday's Forecast

Sunday, July 29, 2018 will start out very similar as the day before with overcast skies. We expect that by the afternoon the skies will start to clear making way for warm temperatures and sunny skies. Winds will be light and the relative humidity will be around 50%.

Outlook: Looking into Monday and Tuesday we anticipate sunny skies, high temperatures and low relative humidity. With this type of weather coming we may start to smell and/or see smoke in the area.



Above photo: Pictures taken the afternoon of July 28, 2018 of one part of North Bay Fire 072. Orange bags of hose are stacked neatly at the helipad waiting for the FireRangers to come get them.

Travel Restrictions

The Ministry of Natural Resources and Forestry is advising the public that due to continued active forest fire activity in the River Valley, Elk Lake and Lady Evelyn area, an Implementation Order is in effect that restricts access to certain roads, parks and Crown lands. Access to these areas is restricted and road blocks have been set up to notify the public of the closures. Within the area, Crown land camping, boating, the landing of float planes, day-tripping, hiking, ATVing as well as accessing private or commercial camps and cottages are NOT permitted. Permits are required to travel through the restricted area.

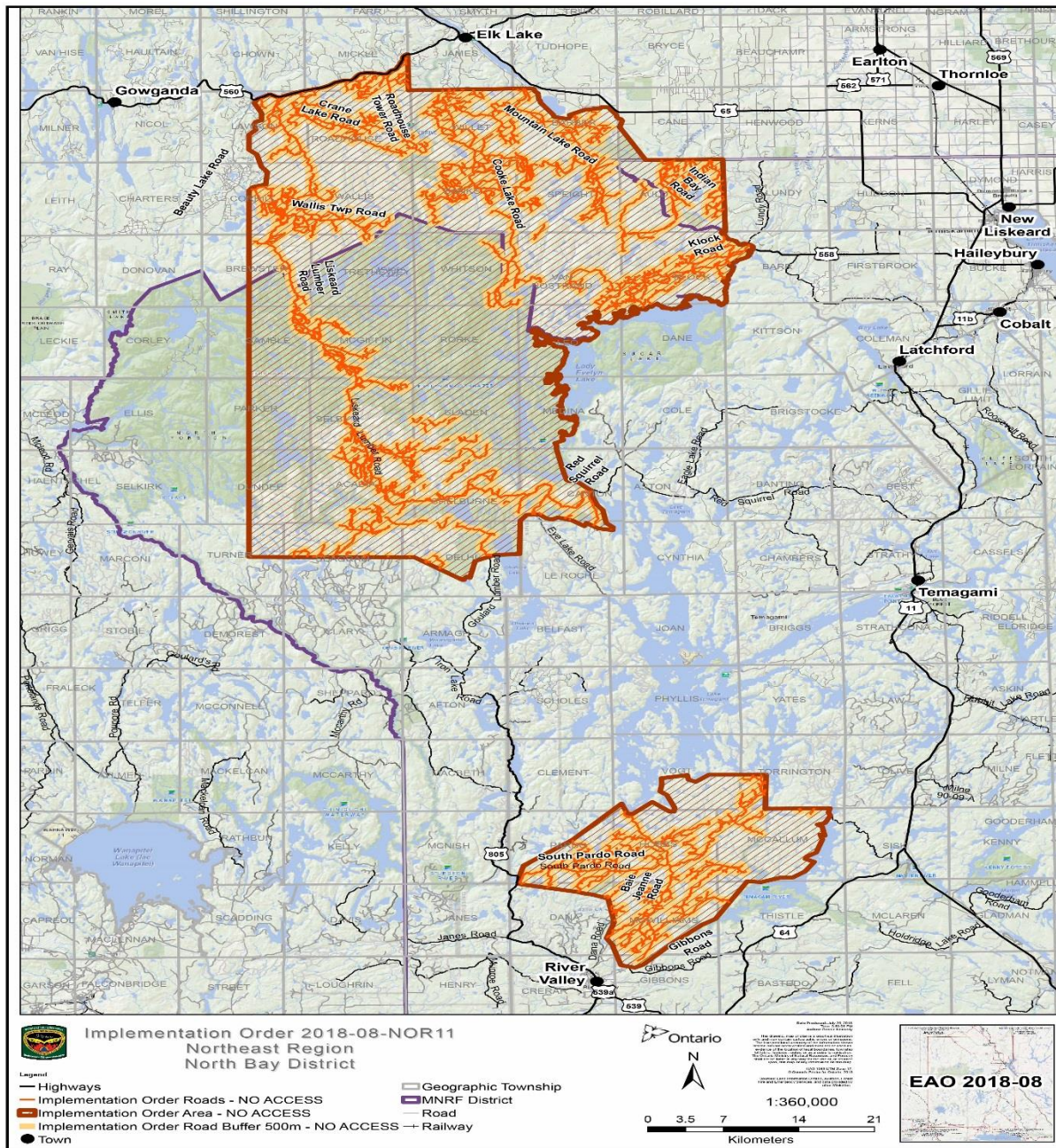
Please visit Ontario.ca/forestfire to view the current restrictions and for more information on how to

obtain a permit.

For inquiries about the travel restrictions, please call:

North Bay - 705-475-5546

Kirkland Lake- 705-568-3201



Restricted Fire Zone

A Fire Restriction remains in effect.

When a Restricted Fire Zone is declared, it is illegal to set a fire within the affected area. Failure to comply could result in a fine of up to \$25,000 and three months in jail, as well as the financial responsibility for any costs incurred in fighting a forest fire caused by the illegal act.

If you need heat for cooking and warmth, you must use a portable gas or propane stove. Portable charcoal equipment (ex. BBQs, Hibachis, etc) are illegal for use during a Restricted Fire Zone, except close to a dwelling you legally own or occupy or in an organized campground.

Visit <https://www.ontario.ca/page/outdoor-fire-restrictions> for more information.

Smoke Concerns

Many Ontario residents have reported smoke drift in their communities. Smokey conditions are expected to continue when fires are active until weather patterns change.

We would like to remind the public that if they do see flames or smoke, please report it. Stay away from the area for public safety.

If you have questions or concerns about smoke and your health, please contact TeleHealth Ontario at 1-866-797-0000.

Did You Know?

It is the job of fire managers to first assess which fires pose a threat to human safety, property and public assets (including homes, businesses, utility corridors, wildlife and merchantable timber) and then to decide what fire-fighting resources are needed and where. In making such decisions, these managers use both their personal experience and information provided by the Canadian Forest Fire Danger Rating System (CFFDRS).

The CFFDRS is the principal source of fire intelligence for all forest fire management agencies in Canada. It is also the most widely applied fire danger rating system in the world. Components of the CFFDRS are used to determine the Fire Danger Rating on a daily basis. The chart below explains the different levels of fire hazard.

Status	Description
Low	Fires likely to be self-extinguishing and new ignitions unlikely. Any existing fires limited to smoldering in deep, drier layers.
Moderate	Creeping or gentle surface fires. Fires easily contained by ground crews with pumps and hand tools.
High	Moderate to vigorous surface fire with intermittent crown involvement. Challenging for ground crews to handle; heavy equipment (bulldozers, tanker trucks, aircraft) often required to contain fire.
Very High	High-intensity fire with partial to full crown involvement. Head fire conditions beyond the ability of ground crews; air attack with retardant required to effectively attack fire's head.
Extreme	Fast-spreading, high-intensity crown fire. Very difficult to control. Suppression actions limited to flanks, with only indirect actions possible against the fire's head.
Nil	No calculations were performed for this region.

Contact Numbers and Online Information

For more information about travel restrictions:

- North Bay MNRF 705-475-5546.
- Kirkland Lake MNRF 705-568-3201.

For general information about the fire situation: 705-564-6165

For information about highway closures: 5-1-1

For inquiries regarding Ontario Parks closures and updates:

- Finlayson Point (including Lady Evelyn-Smoothwater, Obabika River, Makobe-Grays, Solace and Sturgeon River): 705-569-3205
- Marten River: 705-892-2200



FOLLOW: @ONforestfires @ONfeudeforet



WEB: ontario.ca/forestfire ontario.ca/incendiedeforet



CALL: Fire Updates 1-705-564-6165 Travel Updates 705-475-5546