



FOREST FIRE NEWS

Lady Evelyn Park Cluster Fire Update | July 16, 2018

The Lady Evelyn Park cluster is currently managed by the Dale Horan Incident Management team from Ontario.

There are five wildfires burning in this cluster. All are classified as Not Under Control. The fire of note is North Bay 72. Others continue to be Under Observation. With the arrival of new fire fighting crews this week we anticipate good progress on all fires.



North Bay 72

- The size of this fire is 11,296 hectares and Not Under Control. Resources on the wildfire today included: 81 firefighters and support staff, and 9 helicopters. We currently have firefighters from British Columbia, Alberta, Ontario, Nova Scotia, Newfoundland and the Northwest Territories working the fire.
- A successful ignition operation was completed yesterday on the west flank, around Rookery Lake, tying the fire into natural boundaries.
- Crews continued to establish hose lines along the southeast flank.
- Additional ranger crews were established on the north end of the fire.
- Helicopters continued bucketing efforts along the northwest edge to prevent additional fire spread.
- Additional fire crews from British Columbia were added to the ground firefighting personnel today.

North Bay 18, 19, 46 and 59—We continue to monitor these fires.

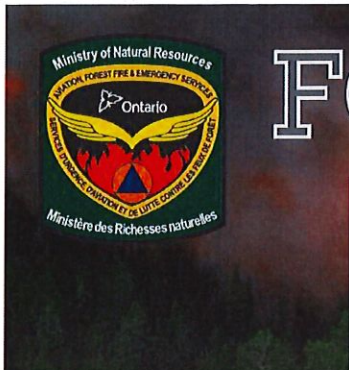
Tuesday's Forecast

Mainly clear to partly cloudy skies in the AM becoming cloudy mid to late morning as a front pushes over the area. Northwesterly winds will veer to become North-northwesterly early in the afternoon. Sustained winds of 10-15 km/hr will become 15-20 km/hr in the afternoon gusting to 25-35km/hr. Winds will become sustained from 5-10 km/hr in the evening as high pressure builds in from the West. Minimum relative humidity will range from 55-60%. High of 18C. Low of 7C.



 @ONForestFires  @ONFeuDeForêt

Visit our website and click on our interactive fire map for updated fire details.
Ontario.ca/forestfire

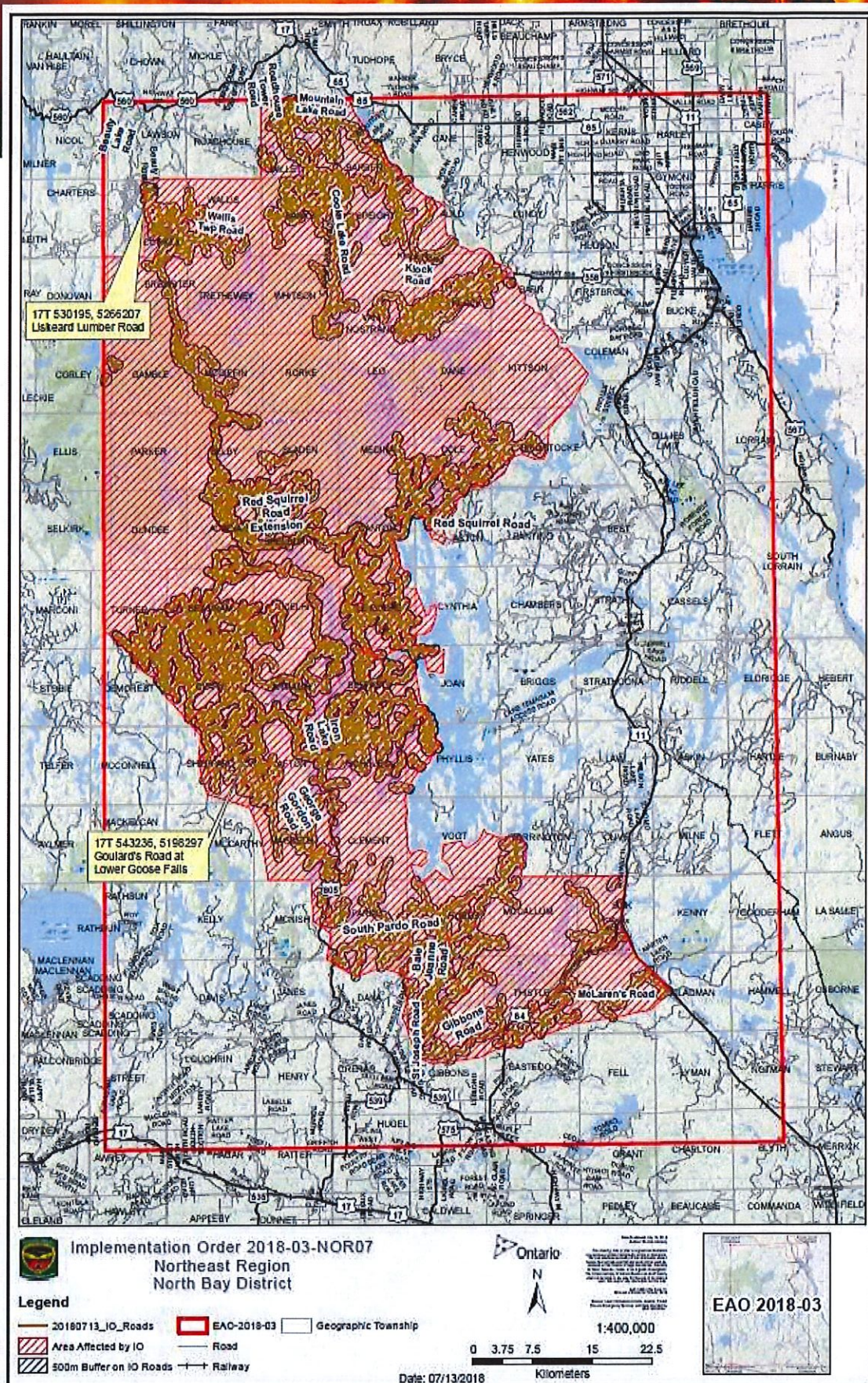


FOREST FIRE NEWS

Travel restrictions

The Ministry of Natural Resources and Forestry is prohibiting access in portions of North Bay, Sudbury and Kirkland Lake Districts where there are public safety hazards as a result of increased fire activity. Crown land camping, boating, day-tripping, hiking, ATVing as well as accessing private or commercial camps/ cottages are not permitted in the area covered by the travel restrictions.

For inquires about the travel restrictions, please call: 705-475-5546





FOREST FIRE NEWS

Restricted Fire Zone

A Fire Restriction remains in effect.

When a Restricted Fire Zone is declared, it is illegal to set a fire within the affected area. Failure to comply could result in a fine of up to \$25,000 and three months in jail, as well as the financial responsibility for any costs incurred in fighting a forest fire caused by the illegal act.

If you need heat for cooking and warmth, you must use a portable gas or propane stove.

Portable charcoal equipment (e.g. BBQs, Hibachis, etc) are illegal for use during a Restricted Fire Zone except close to a dwelling that you legally own or occupy or in an organized campground.

Visit <https://www.ontario.ca/page/outdoor-fire-restrictions> for more information.

Smoke Concerns

- Many Ontario residents have reported smoke drift in their communities. Smoky conditions are expected to continue when fires are active, until weather patterns change.
- We would like to remind the public that if they do see flames or smoke, please report it, and stay away from the area in the interest of public safety.
- If you have questions or concerns about smoke and your health, please contact TeleHealth Ontario at 1-866-797-0000.

Contact numbers and online information

For information about travel restrictions: 705-475-5546

For general information about the fire situation: 705-564-6165

For inquiries on highway closures: Call 5-1-1

For public inquiries regarding Ontario Parks closures and updates:

- Finalyson Point (including Lady Evelyn—Smoothwater, Obabika River, Makobe-Grays, Solace and Sturgeon River) 705-569-3205
- Marten River 705-892-2200

 @ONForestFires  @ONFeuDeForêt

Visit our website and click on our interactive fire map for updated fire details.
Ontario.ca/forestfire



Did you know?

Stages of control are classifications assigned to fires that are being suppressed. The Ministry of Natural Resources and Forestry uses the following four stages of control:

Not Under Control (NUC)

Describes a wildfire not responding or only responding on a limited basis to suppression action, such that perimeter spread is not being contained.

Being Held (BHE)

Indicates that with currently committed resources, sufficient suppression action has been taken so that the fire is not likely to spread beyond existent or predetermined control boundaries under prevailing or forecasted conditions.

Under Control (UCO)

Describes a forest fire that has received sufficient suppression action to ensure no further spread of the fire.

OUT

Describes a fire

that has been ex-



 @ONForestFires  @ONFeuDeForêt

Visit our website and click on our interactive fire map for updated fire details.

Ontario.ca/forestfire