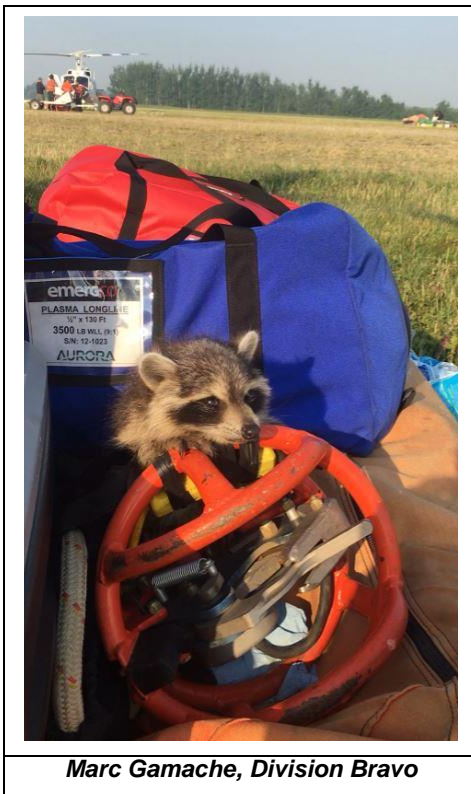




FOREST FIRE

News - July 19, 2018 as of 22:30



Marc Gamache, Division Bravo

Lady Evelyn Park Cluster Fire Update

The Lady Evelyn Park cluster is managed by the Dale Horan Incident Management team from Ontario. 176 firefighters and support staff, and 11 helicopters were assigned to the Cluster today. All resources were assigned to North Bay 72. The team continues to observe North Bay 59 and has turned over North Bay 18, 19 and 46 to the Gary Hartland team currently managing the Temagami Cluster to the south.

North Bay 72

Heavy helicopters continued to bucket water onto North Bay 72 today, coordinating with crews on the ground. Fire behaviour was aggressive today with high temperatures, low relative humidity and gusty winds. Crews continue to establish hose line along the east and north perimeter of the fire.

- The fire perimeter of North Bay 72 is approximately 80 kilometres.
- Smoke in the morning was significant in some areas due to an inversion, and later in the day with increased fire activity.
- There was minimal growth on the fire today and most was contained to natural boundaries.

- Sprinklers were activated as a precautionary measure to protect values on the northeast section of the fire as winds were pushing in that direction.
- There was one new lightning start in the general area this afternoon, just southwest of North Bay 72. Initial attack by aircraft was used to suppress this fire.
- We currently have firefighters from British Columbia, Alberta, Ontario, Nova Scotia, Newfoundland and the Northwest Territories.



- **Forecast and weather information**



Friday's Forecast

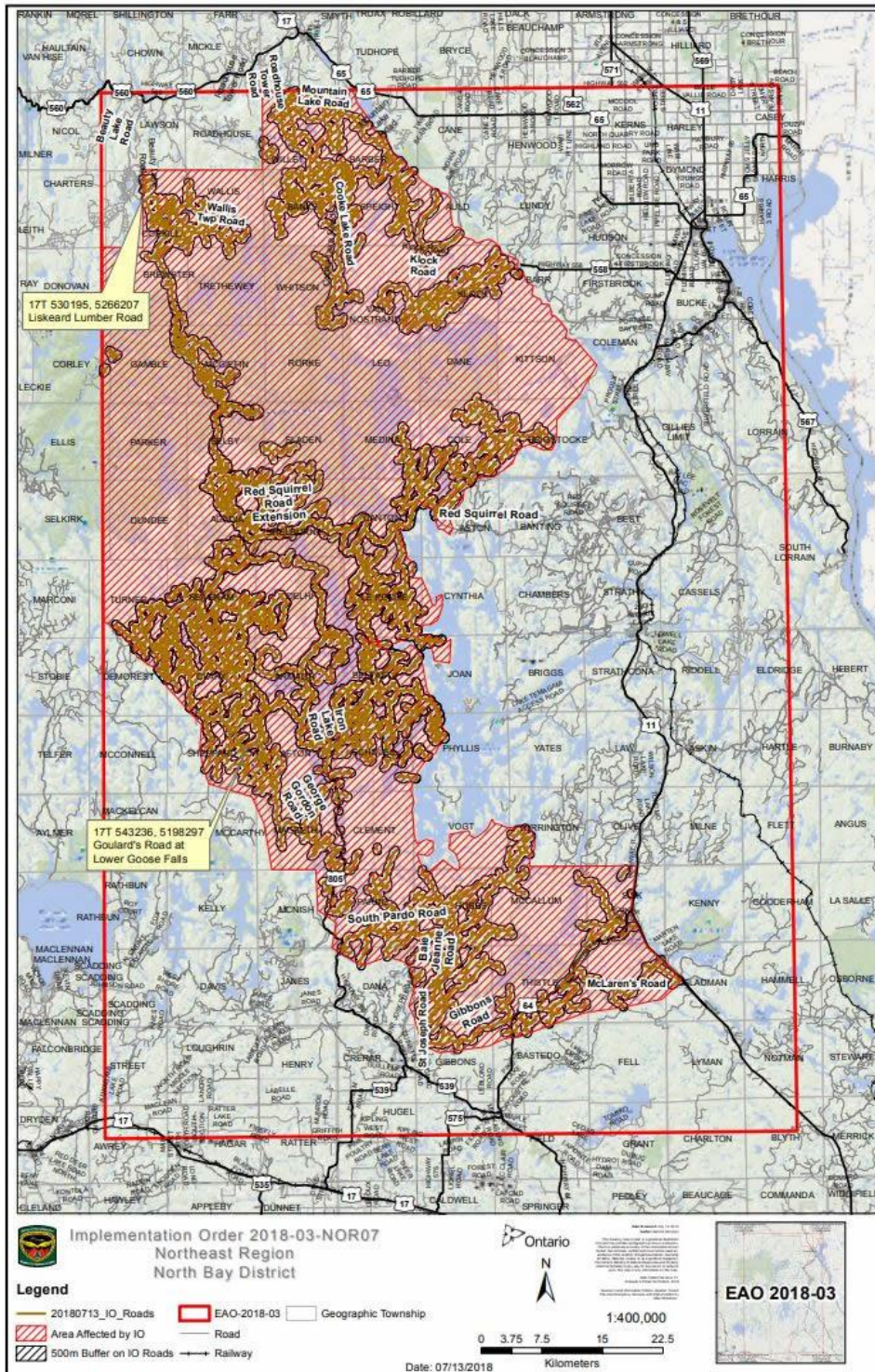
Winds in general will be moderate out of the southeast, pushing northwest at 15 km/h. Relative humidity value 30%. There is no long-range precipitation in the forecast.



(Left) Helitack Technician Jarret Whitbread, captured this image of North Bay 72 on July 18. (Below) Helco Damon Hibbard captured the Sikorsky-61 bucketing on North Bay 72.



Travel Restrictions



The Ministry of Natural Resources and Forestry is prohibiting access in portions of North Bay, Sudbury and Kirkland Lake Districts where there are public safety hazards. Crown land camping, boating, day-tripping, hiking, ATVing as well as accessing private or commercial camps or cottages are not permitted in the area covered by the travel restrictions.

For inquiries about the travel restrictions, please call: 705-475-5546.

Restricted Fire Zone

A Restricted Fire Zone remains in effect.

When a Restricted Fire Zone is declared, it is illegal to set a fire within the affected area.

Failure to comply could result in a fine of up to \$25,000 and three months in jail, as well as the financial responsibility for any costs incurred in fighting a forest fire caused by the illegal act.

If you need heat for cooking and warmth, you must use a portable gas or propane stove. Portable charcoal equipment (ex. BBQs, Hibachis, etc) are illegal for use during a Restricted Fire Zone, except close to a dwelling you legally own or occupy or in an organized campground.

Visit <https://www.ontario.ca/page/outdoor-fire-restrictions> for more information.

Smoke Concerns

Many Ontario residents have reported smoke drift in their communities. Smoky conditions are expected to continue when fires are active until weather patterns change.

We would like to remind the public that if they do see flames or smoke, please report it. Stay away from the area for public safety.

If you have questions or concerns about smoke and your health, please contact TeleHealth Ontario at 1-866-797-0000.



Thanks for your support!

A community member dropped off this package for staff at the Fire Base today.

Much appreciated.

Did You Know?

Fire agencies across the country have a tradition of coming to each other's assistance whenever necessary.

In Canada, firefighting equipment, aircraft and personnel are shared under the Canadian Interagency Mutual Aid Resources Sharing (MARS) Agreement and coordinated out of the Canadian Interagency Forest Fire Centre (CIFFC). This agreement lays out the terms under which resources can be shared, how resources will be made available, what costs will be involved and the conditions for their return.

In 2017, under this agreement, Ontario's Aviation, Forest, Fire and Emergency Services (AFFES) deployed 1,040 staff members out of province. Some of these individuals went out of province more than once. Of these, 997 people went to British Columbia, 8 were sent out of province to assist the CIFFC, 21 were deployed to Manitoba and 14 people travelled to Alberta to assist Parks Canada.

This year, the other parts of Canada are lending their hand to Ontario. We are currently receiving assistance from:

- Saskatchewan (24 personnel and 2 air tankers and 1 Birddog)
- Alberta (89 personnel, 8 Air tankers, 2 Birddogs, 960 lengths of hose plus other equipment)
- British Columbia (100 personnel, 1090 lengths of hose plus other equipment)
- Nova Scotia (22 personnel)
- Prince Edward Island (4 personnel)
- Newfoundland (4 personnel)
- Northwest Territories (23 personnel)

Additional resources are expected in the coming days from Northwest Territories, Nova Scotia, Newfoundland, Saskatchewan and Alberta.



Forest Fire personnel from across Canada come together to assist with the forest fire situation in Ontario.

In addition to co-operative agreement between the Canadian provinces and Territories, the Canada/United States Reciprocal Forest Fire Fighting Arrangement (CANUS) authorises the sharing of resources across the international boundary. Both Wisconsin and Minnesota have provided assistance to Ontario this year.

In addition, Ontario has arrangements with Australia, Mexico, New Zealand and South Africa. Requests for assistance from and to other countries are negotiated on an as-and-when needed basis.

Contact Numbers and Online Information

For more information about travel restrictions for the Lake Temagami/Lady Evelyn/River Valley Clusters: 705-475-5546

For general information about the fire situation: 705-564-6165

For information about highway closures: 5-1-1

For inquiries regarding Ontario Parks closures and updates:

- Finalyson Point (including lady Evelyn-Smoothwater, Obabika River, Makobe-Grays, Solace and Sturgeon River): 705-569-3205
- Marten River: 705-892-2200

To receive this Newsletter by email please send us a request at AFFES.Communications@ontario.ca



FOLLOW: @ONforestfires @ONfeudeforet



WEB: ontario.ca/forestfire ontario.ca/incendiedeforet



CALL: Fire Updates 1-705-564-6165 Travel Updates 705-475-5546