



FOREST FIRE

News - July 17, 2018



Lady Evelyn Park Cluster Fire Update

The Lady Evelyn Part cluster is currently managed by the Dale Horan Incident Management team from Ontario.

North Bay 72

- Heavy helicopters continued to bucket water onto North Bay 72 today, collaborating with crews on the ground.
- Planned ignition to reduce forest fuels ahead of the fire along the west flank were cancelled due to weather conditions. This will take place as soon as weather conditions permit.
- We currently have firefighters from British Columbia, Alberta, Ontario, Nova Scotia, Newfoundland and the Northwest Territories working the fire.



- Other fires in the cluster were quiet today.

Forecast and weather information

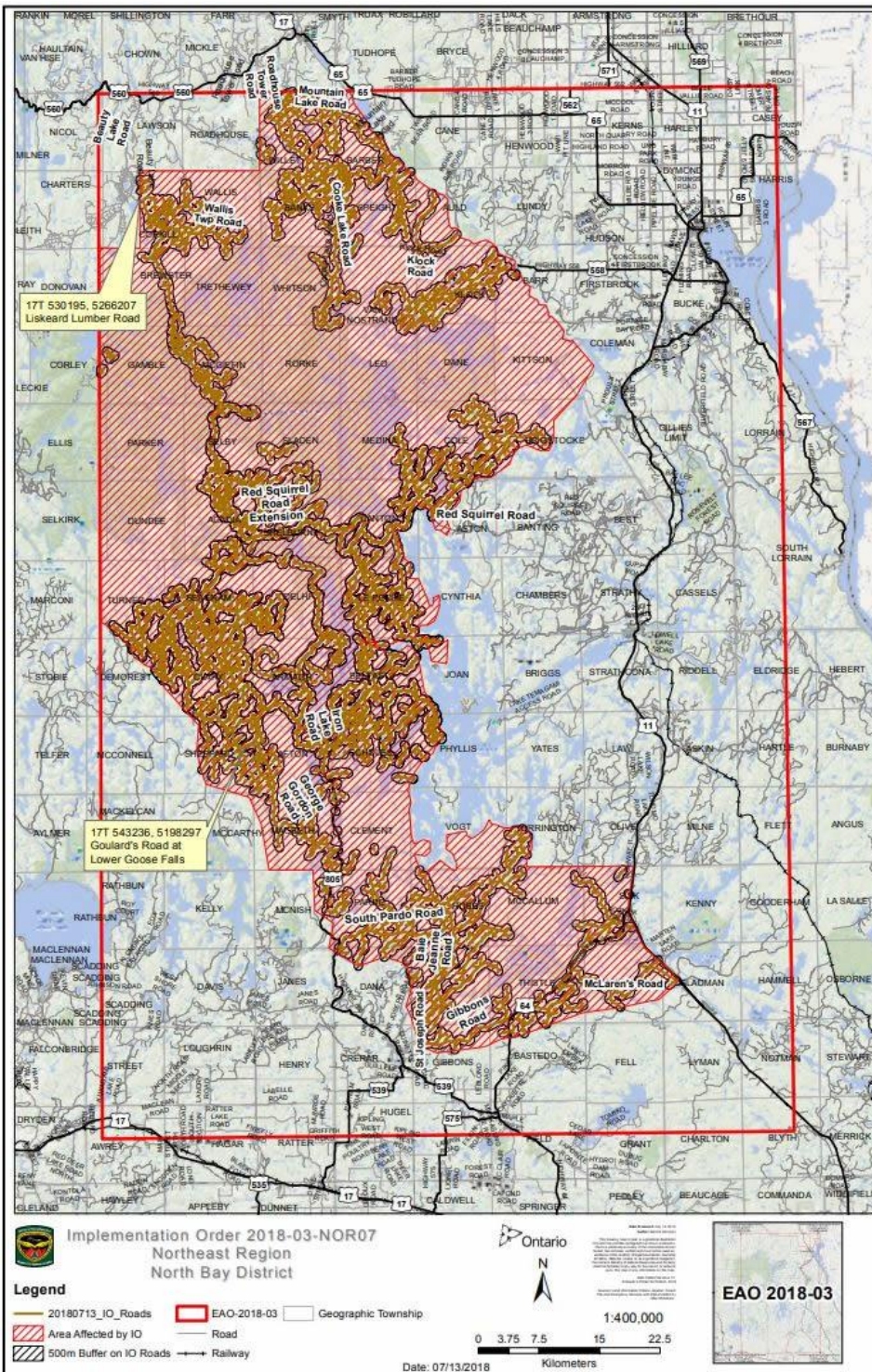


Wednesday's Forecast

- Winds in general will be light to moderate out of the west to southwest with occasional gusts to 45km/h developing throughout the day. Relative humidity values will dip to the 20 to 30% range over much of the Northeast Region.



Travel Restrictions



The Ministry of Natural Resources and Forestry is prohibiting access in portions of North Bay, Sudbury and Kirkland Lake Districts where there are public safety hazards as a result of increased fire activity. Crown land camping, boating, day-tripping, hiking, ATving as well as accessing private or commercial camps or cottages are not permitted in the area covered by the travel restrictions.

For inquiries about the travel restrictions, please call: 705-475-5546.

Restricted Fire Zone

A Fire Restriction remains in effect.

When a Restricted Fire Zone is declared, it is illegal to set a fire within the affected area. Failure to comply could result in a fine of up to \$25,000 and three months in jail, as well as the financial responsibility for any costs incurred in fighting a forest fire caused by the illegal act.

If you need heat for cooking and warmth, you must use a portable gas or propane stove. Portable charcoal equipment (ex. BBQs, Hibachis, etc) are illegal for use during a Restricted Fire Zone, except close to a dwelling you legally own or occupy or in an organized campground.

Visit <https://www.ontario.ca/page/outdoor-fire-restrictions> for more information.

Smoke Concerns

Many Ontario residents have reported smoke drift in their communities. Smokey conditions are expected to continue when fires are active until weather patterns change.

We would like to remind the public that if they do see flames or smoke, please report it. Stay away from the area for public safety.

If you have questions or concerns about smoke and your health, please contact TeleHealth Ontario at 1-866-797-0000.

Did You Know?

A forest fire is any wildfire or prescribed fire that is burning in forested areas, grass, or alpine/tundra vegetation. A forest fire is divided into a number of different parts:

The Fire Perimeter

The entire outer edge boundary of a fire. The fire perimeter is sometimes referred to as the fire's edge.

The Head of a Fire

The head is the most rapidly spreading part of the fire's perimeter and has the greatest fire intensity. It is usually driven by the wind, the uphill effects of slope, or the flammability of the forest fuel.

Flanks

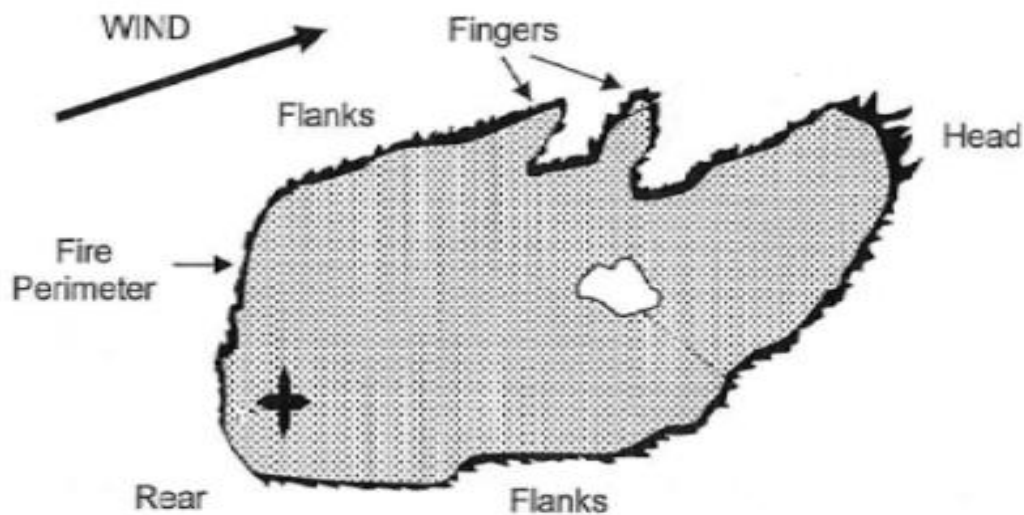
Those portions of the fire perimeter that are between the head and rear of the fire, and which are roughly parallel to the main direction of fire spread.

Rear

The portion of the fire perimeter that is opposite to the head. The rear is usually the slowest spreading part of the fire.

Finger

The long narrow extensions projecting from the main body of the fire resulting in an irregular fire perimeter. This fire pattern can happen when the forest fuel in the finger is more conducive to increased fire spread than the surrounding forest.



Contact Numbers and Online Information

For more information about travel restrictions: 705-475-5546

For general information about the fire situation: 705-564-6165

For information about highway closures: 5-1-1

For inquiries regarding Ontario Parks closures and updates:

- Finalyson Point (including lady Evelyn-Smoothwater, Obabika River, Makobe-Grays, Solace and Sturgeon River): 705-569-3205
- Marten River: 705-892-2200



FOLLOW: @ONforestfires @ONfeudeforet



WEB: ontario.ca/forestfire ontario.ca/incendiedeforet



CALL: Fire Updates 1-705-564-6165 Travel Updates 705-475-5546