



FOREST FIRE

News July 19, 2018 – 22:30

River Valley Cluster Fire Update

The River Valley cluster is being managed by the Rick Moore Incident Management team from Alberta. This cluster includes two fires, North Bay 62 and North Bay 42.

North Bay 42:

- Location: North of Red Cedar Lake
- Size: 350 Hectares
- Status: Not Under Control

Crews continued to focus on hotspots today. They also worked their way in from the outside perimeter on the south and west sides of the fire. Crews were working on the north side of the fire, which was active this afternoon under windy conditions. Helicopters with buckets supported ground crew efforts. Some smoke was visible this afternoon as winds picked up.

North Bay 62:

- Location: Southwest of Hand Lake
- Size: 2,500 Hectares
- Status: not under control

Crews continued to work with pumps and hoses on the south, west and east sides of the fire today, extinguishing hotspots and strengthening perimeter extinguishment.



Thursday's Forecast

Mainly clear conditions are expected tomorrow with a high of 28 degrees, humidity of 25-35%, and light winds from the south/southwest at 12-15 km/hr. In the afternoon, during peak burn, winds are expected to increase, gusting to 25 km/hr before easing into the evening. We are not expecting any precipitation on this fire.

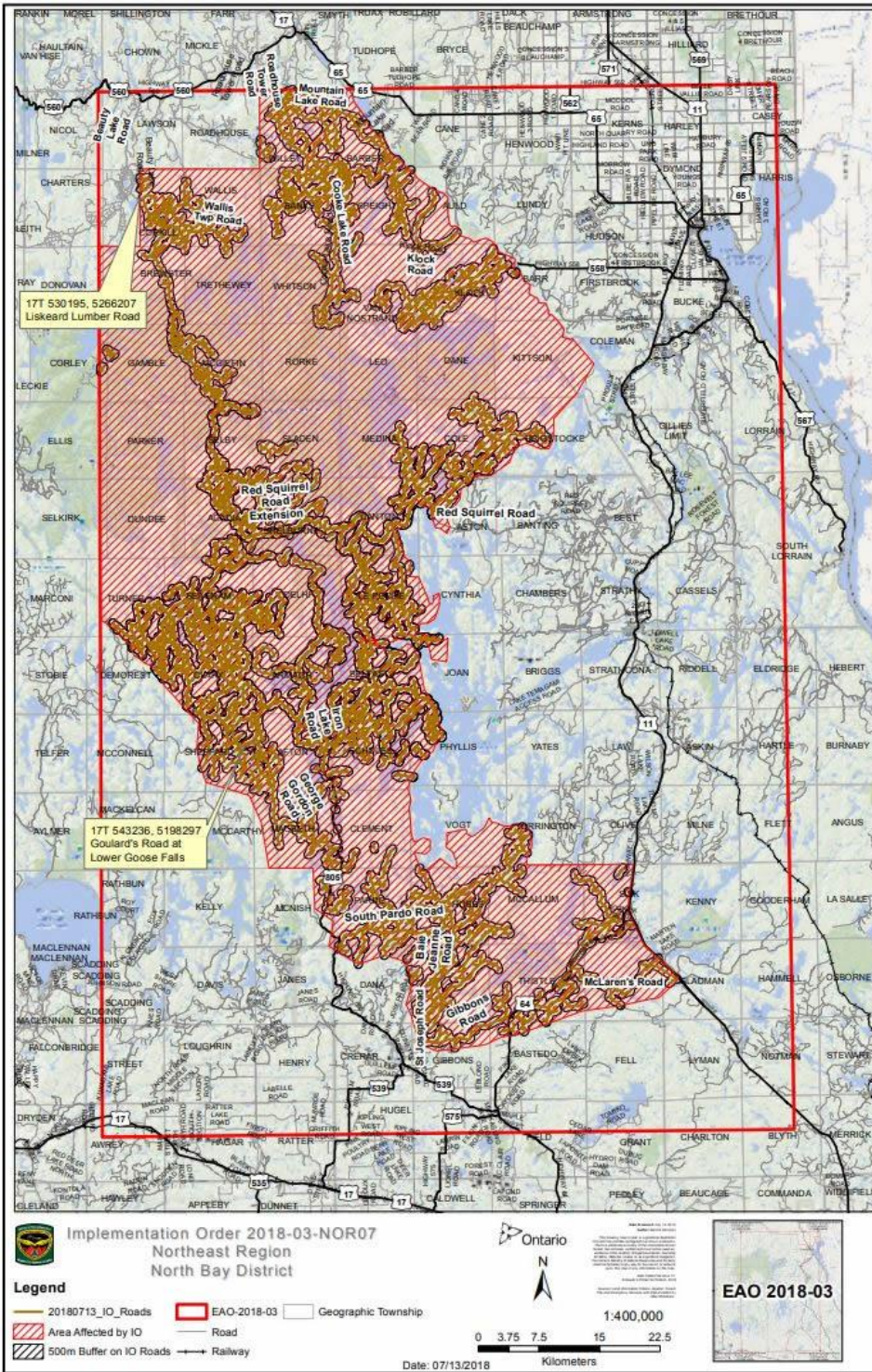


Firefighters work hard on the line, connecting hoses to pumps like this one, and dragging that hose for miles through the bush. The pressured water from the hoses is directed onto open flames, but the harder, more intensive work is spraying the water onto hotspots and into tree roots and other areas where the fire tends to hide out and smoulder. It's important to get these smouldering hotspots completely out because they can come back to life when the winds pick up. It's hard, back breaking work, with pulaskies and shovels, hoses and water.

The photo below shows trees that fell over after their roots burned out. This illustrates the idea of fire burning underground and the importance of getting the smouldering fires extinguished. It also illustrates the danger to firefighters in the bush from trees that were damaged by the fire and haven't fallen over yet. It also shows how tough it can be on our crews as they walk through the forest.



Travel Restrictions



The Ministry of Natural Resources and Forestry is prohibiting access in portions of North Bay, Sudbury and Kirkland Lake Districts where there are public safety hazards as a result of increased fire activity. Crown land camping, boating, day-tripping, hiking, ATViing as well as accessing private or commercial camps or cottages are not permitted in the area covered by the travel restrictions.

For inquiries about the travel restrictions, please call: 705-475-5546.

Restricted Fire Zone

A Restricted Fire Zone remains in effect.

When a Restricted Fire Zone is declared, it is illegal to set a fire within the affected area. Failure to comply could result in a fine of up to \$25,000 and three months in jail, as well as the financial responsibility for any costs incurred in fighting a forest fire caused by the illegal act.

If you need heat for cooking and warmth, you must use a portable gas or propane stove. Portable charcoal equipment (ex. BBQs, Hibachis, etc) are illegal for use during a Restricted Fire Zone, except close to a dwelling you legally own or occupy or in an organized campground.

Visit <https://www.ontario.ca/page/outdoor-fire-restrictions> for more information.

Smoke Concerns

Many Ontario residents have reported smoke drift in their communities. Smokey conditions are expected to continue when fires are active until weather patterns change.

We would like to remind the public that if they do see flames or smoke, please report it. Stay away from the area for public safety.

If you have questions or concerns about smoke and your health, please contact TeleHealth Ontario at 1-866-797-0000

Did You Know?

Fire agencies across the country have a tradition of coming to each other's assistance whenever necessary.

In Canada, firefighting equipment, aircraft and personnel are shared under the Canadian Interagency Mutual Aid Resources Sharing (MARS) Agreement and coordinated out of the Canadian Interagency Forest Fire Centre (CIFFC). This agreement lays out the terms under which resources can be shared, how resources will be made available, what costs will be involved and the conditions for their return.

In 2017, under this agreement, Ontario's Aviation, Forest, Fire and Emergency Services (AFFES) deployed 1,040 staff members out of province. Some of these individuals went out of province more than once. Of these, 997 people went to British Columbia, 8 were sent out of province to assist the CIFFC, 21 were deployed to Manitoba and 14 people travelled to Alberta to assist Parks Canada.

This year, the other parts of Canada are lending their hand to Ontario. We are currently receiving assistance from:

- Saskatchewan (24 personnel and 2 air tankers and 1 Birddog)
- Alberta (89 personnel, 8 Air tankers, 2 Birddogs, 960 lengths of hose plus other equipment)
- British Columbia (100 personnel, 1090 lengths of hose plus other equipment)
- Nova Scotia (22 personnel)
- Prince Edward Island (4 personnel)
- Newfoundland (4 personnel)
- Northwest Territories (23 personnel)

Additional resources are expected in the coming days from Northwest Territories, Nova Scotia, Newfoundland, Saskatchewan and Alberta.



Forest Fire personnel from across Canada come together to assist with the forest fire situation in Ontario.

In addition to co-operative agreement between the Canadian provinces and Territories, the Canada/United States Reciprocal Forest Fire Fighting Arrangement (CANUS) authorises the sharing of resources across the international boundary. Both Wisconsin and Minnesota have provided assistance to Ontario this year.

In addition, Ontario has arrangements with Australia, Mexico, New Zealand and South Africa. Requests for assistance from and to other countries are negotiated on an as-and-when needed basis.

Contact Numbers and Online Information

For more information about travel restrictions in the areas of the Lake Temagami/Lady Evelyn or River Valley Clusters: 705-475-5546

For general information about the fire situation: 705-564-6165

For information about highway closures: 5-1-1

For inquiries regarding Ontario Parks closures and updates:

- Finalyson Point (including lady Evelyn-Smoothwater, Obabika River, Makobe-Grays, Solace and Sturgeon River): 705-569-3205
- Marten River: 705-892-2200

If you'd like to receive this newsletter daily, please send your email address to affes.communications@ontario.ca.



FOLLOW: @ONforestfires @ONfeudeforet



WEB: ontario.ca/forestfire ontario.ca/incendiedeforet



CALL: Fire Updates 1-705-564-6165 Travel Updates 705-475-5546