



FOREST FIRE

News July 17, 2018

Lake Temagami Cluster Fire Update

The Lake Temagami cluster is currently managed by the Garry Harland Incident Management team from Ontario. Ontario has 146 forest fire fighters, with 7 helicopters working on fires within the Lake Temagami cluster.

Today was another great working day on all fires within the Lake Temagami cluster. Due to the recent rainfall and the higher humidity, reduced fire activity has aided firefighting efforts on fires within the cluster.

This afternoon, the Municipality of Temagami hosted an information session at the Temagami municipal office and members of the incident management team were there to share fire information with the community. This information session was well received by members of the public.

The status of North Bay 55, a fire approximately 8.5 km southeast of the Town of Temagami on the east side of Hwy 11, has now been updated to 'Being Held'. North Bay 69, which previously caused the evacuation of twenty homes in the Temagami area last week, is still 'being held'.

Crews continue to patrol and mop up North Bay 14, North Bay 22, North Bay 53, North Bay 54, North Bay 62, North Bay 65, North Bay 66, North Bay 75, North Bay 80 and North Bay 93 which are all fires that are 'under control'. North Bay 61 and North Bay 68 are still 'not under control' and continue to be monitored.

Ontario FireRangers from Link Lake responded to a new fire, North Bay 100 located on the north east side of Rabbit Lake and were able to declare the fire 'out'.

Value protection systems remain on NOR68, NOR69, NOR55, and NOR56.



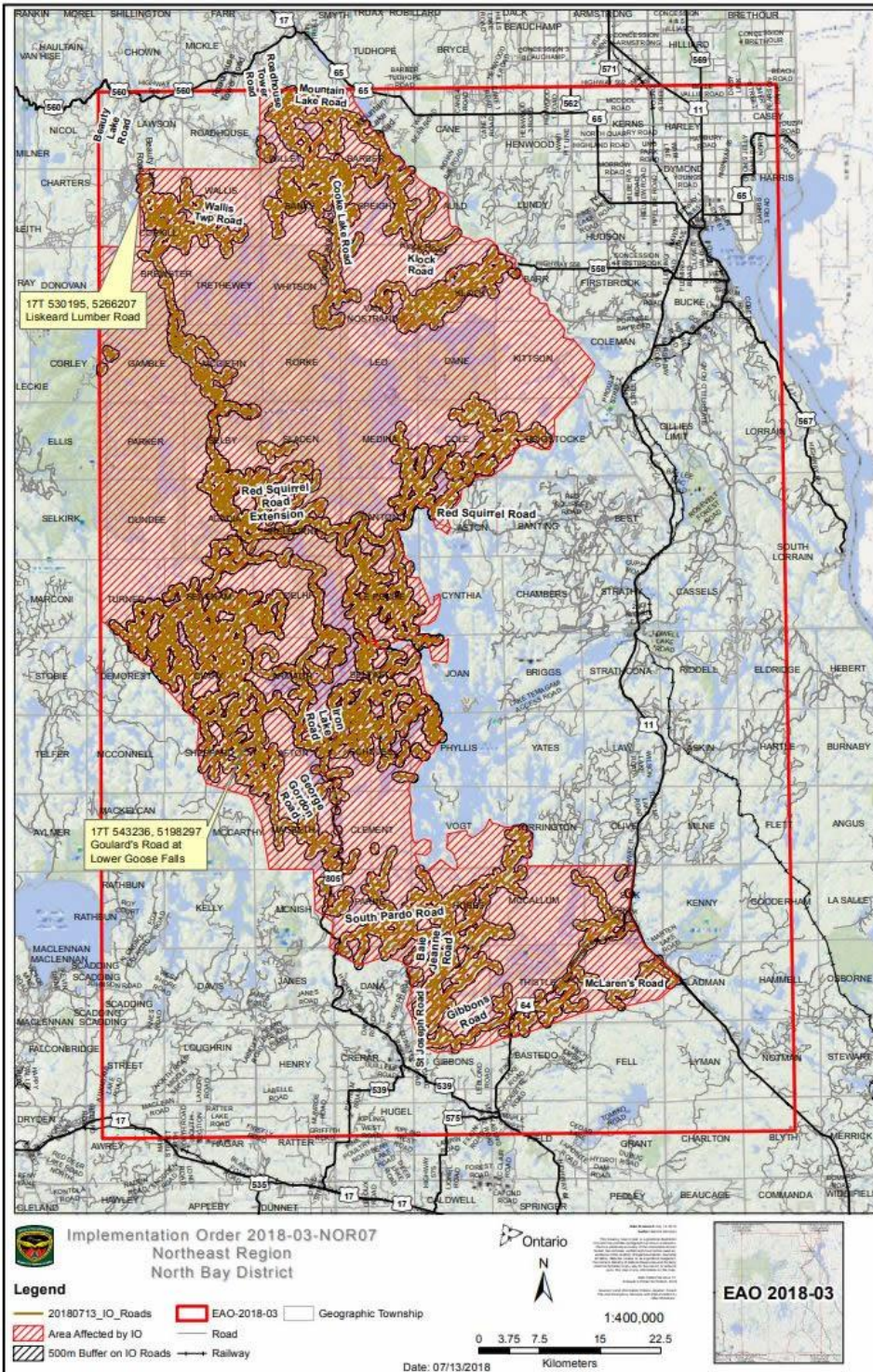
Wednesday's Forecast

Sunny skies are expected in the area tomorrow. As temperatures rise into the high 20C range winds in general will be light to moderate out of the west to southwest with occasional gusts to 45km/h developing throughout the day. Relative humidity values will dip to the 20 to 30% range over much of the Northeast Region.



Picture of the information session hosted by the Municipality of Temagami today

Travel Restrictions



The Ministry of Natural Resources and Forestry is prohibiting access in portions of North Bay, Sudbury and Kirkland Lake Districts where there are public safety hazards as a result of increased fire activity. Crown land camping, boating, day-tripping, hiking, ATViing as well as accessing private or commercial camps or cottages are not permitted in the area covered by the travel restrictions.

For inquiries about the travel restrictions, please call: 705-475-5546.

Restricted Fire Zone

A Fire Restriction remains in effect.

When a Restricted Fire Zone is declared, it is illegal to set a fire within the affected area. Failure to comply could result in a fine of up to \$25,000 and three months in jail, as well as the financial responsibility for any costs incurred in fighting a forest fire caused by the illegal act.

If you need heat for cooking and warmth, you must use a portable gas or propane stove. Portable charcoal equipment (ex. BBQs, Hibachis, etc) are illegal for use during a Restricted Fire Zone, except close to a dwelling you legally own or occupy or in an organized campground.

Visit <https://www.ontario.ca/page/outdoor-fire-restrictions> for more information.

Smoke Concerns

Many Ontario residents have reported smoke drift in their communities. Smokey conditions are expected to continue when fires are active until weather patterns change.

We would like to remind the public that if they do see flames or smoke, please report it. Stay away from the area for public safety.

If you have questions or concerns about smoke and your health, please contact TeleHealth Ontario at 1-866-797-0000.

Did You Know?

A forest fire is any wildfire or prescribed fire that is burning in forested areas, grass, or alpine/tundra vegetation. A forest fire is divided into a number of different parts:

The Fire Perimeter

The entire outer edge boundary of a fire. The fire perimeter is sometimes referred to as the fire's edge.

The Head of a Fire

The head is the most rapidly spreading part of the fire's perimeter and has the greatest fire intensity. It is usually driven by the wind, the uphill effects of slope, or the flammability of the forest fuel.

Flanks

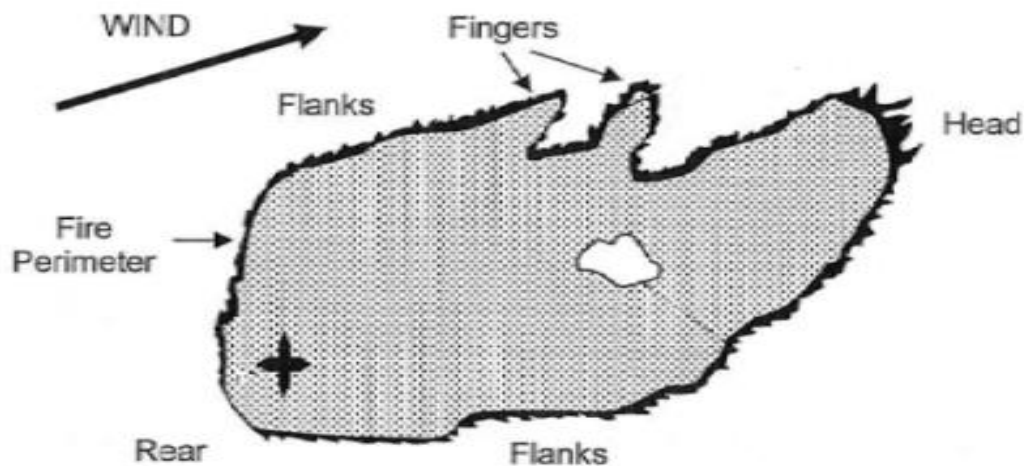
Those portions of the fire perimeter that are between the head and rear of the fire, and which are roughly parallel to the main direction of fire spread.

Rear

The portion of the fire perimeter that is opposite to the head. The rear is usually the slowest spreading part of the fire.

Finger

The long narrow extensions projecting from the main body of the fire resulting in an irregular fire perimeter. This fire pattern can happen when the forest fuel in the finger is more conducive to increased fire spread than the surrounding forest.



Contact Numbers and Online Information

For more information about travel restrictions: 705-475-5546

For general information about the fire situation: 705-564-6165

For information about highway closures: 5-1-1

For inquiries regarding Ontario Parks closures and updates:

- Finalyson Point (including lady Evelyn-Smoothwater, Obabika River, Makobe-Grays, Solace and Sturgeon River): 705-569-3205
- Marten River: 705-892-2200



FOLLOW: @ONforestfires @ONfeudeforet



WEB: ontario.ca/forestfire ontario.ca/incendiedeforet



CALL: Fire Updates 1-705-564-6165 Travel Updates 705-475-5546