



FOREST FIRE

News July 17, 2018

River Valley Cluster Fire Update

The River Valley cluster is currently managed by the Greg Kirkland Incident Management team from Ontario. This cluster now only includes two fires, North Bay 62 and North Bay 42. North Bay 45 was called out.

An Incident Management team from Alberta has arrived and will take over the cluster tomorrow afternoon.

North Bay 42:

- Location: North of Red Cedar Lake
- Size: 350 Hectares
- Status: Not Under Control

North Bay 62:

- Location: Southwest of Hand Lake
- Size: 2,500 Hectares
- Status: not under control

Since June 29, there have been 239,000 lightning strikes in the province of Ontario. More fires caused by recent lightning are expected to be confirmed over the course of the coming week.

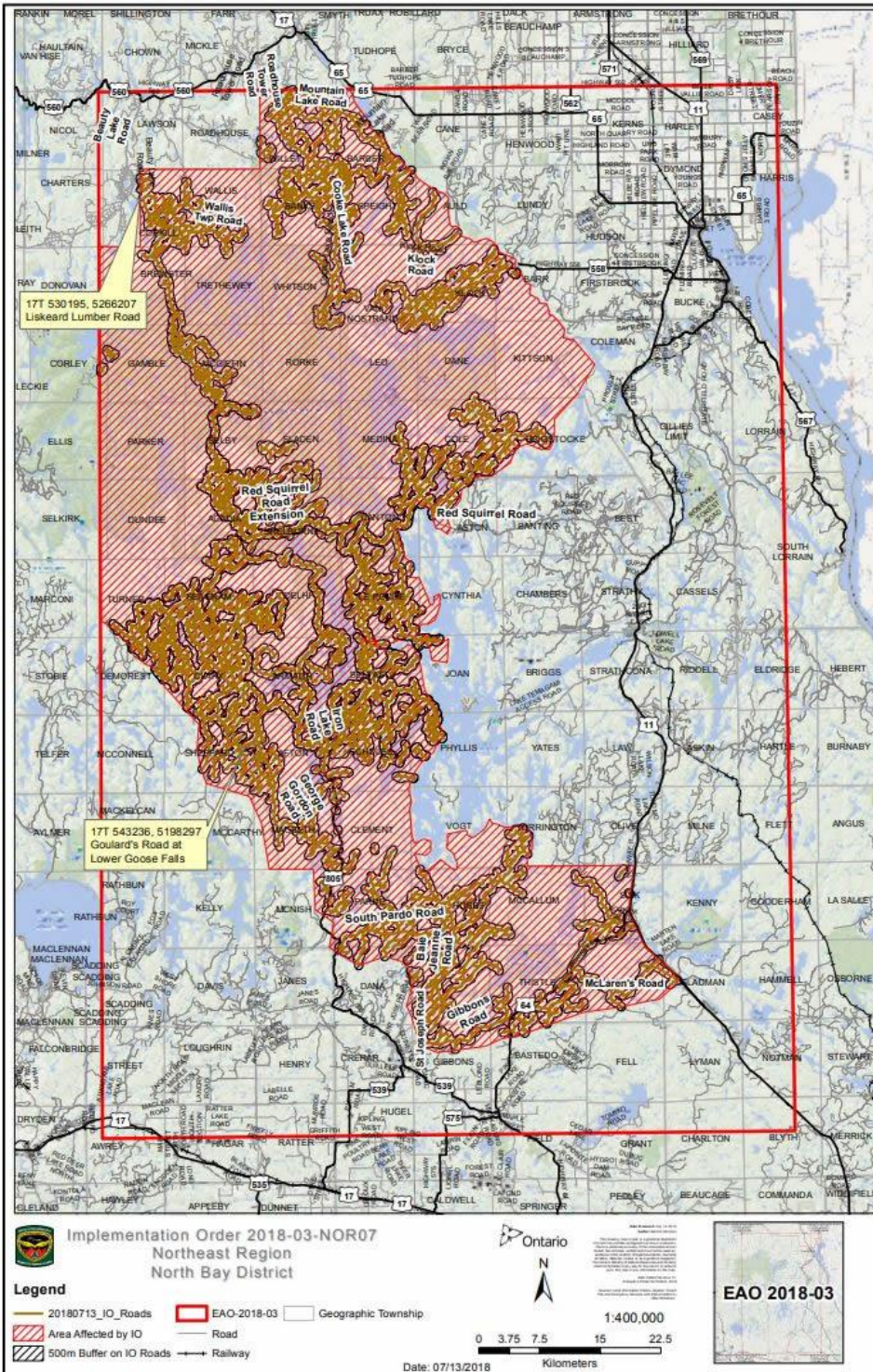


Wednesday's Forecast

Sunny skies are expected in the area tomorrow. As temperatures rise into the high 20C range winds in general will be light to moderate out of the west to southwest with occasional gusts to 45km/h developing throughout the day. Relative humidity values will dip to the 20 to 30% range over much of the Northeast Region.



Travel Restrictions



The Ministry of Natural Resources and Forestry is prohibiting access in portions of North Bay, Sudbury and Kirkland Lake Districts where there are public safety hazards as a result of increased fire activity. Crown land camping, boating, day-tripping, hiking, ATving as well as accessing private or commercial camps or cottages are not permitted in the area covered by the travel restrictions.

For inquiries about the travel restrictions, please call: 705-475-5546.

Smoke Concerns

Many Ontario residents have reported smoke drift in their communities. Smokey conditions are expected to continue when fires are active until weather patterns change.

We would like to remind the public that if they do see flames or smoke, please report it. Stay away from the area for public safety.

If you have questions or concerns about smoke and your health, please contact TeleHealth Ontario at 1-866-797-0000.

Restricted Fire Zone

A Fire Restriction remains in effect.

When a Restricted Fire Zone is declared, it is illegal to set a fire within the affected area. Failure to comply could result in a fine of up to \$25,000 and three months in jail, as well as the financial responsibility for any costs incurred in fighting a forest fire caused by the illegal act.

If you need heat for cooking and warmth, you must use a portable gas or propane stove. Portable charcoal equipment (ex. BBQs, Hibachis, etc) are illegal for use during a Restricted Fire Zone, except close to a dwelling you legally own or occupy or in an organized campground.

Visit <https://www.ontario.ca/page/outdoor-fire-restrictions> for more information.



Aviation, Forest Fire and
Emergency Services

Services d'urgence, d'aviation et de
lutte contre les feux de forêt

What You Should Know About Restricted Fire Zones



**It's important! And it's
the law!**

A Restricted Fire Zone is a specific geographic area where the use of open fires, like campfires or debris burning, is restricted.

It is a temporary measure put in place by the Minister of Natural Resources and Forestry when the fire danger is extreme to prevent human caused fires. A Restricted Fire Zone order may last from a few days to weeks depending on conditions. The restrictions are lifted as soon as conditions allow.

When a Restricted Fire Zone is declared, it is illegal to set a fire within the affected area. Failure to comply could result in a fine of up to \$25,000 and three months in jail, as well as the financial responsibility for any costs incurred in fighting a forest fire caused by the illegal act.

You can still go camping, hiking, fishing, and have fun outdoors, but if you need heat for cooking and warmth, you'll have to use a portable gas or propane stove.

Portable charcoal equipment (e.g., BBQs, Hibachis, etc.) are illegal for use during a Restricted Fire Zone except close to a dwelling that you legally own or occupy or in an organized campground.

Commercial campground operators may allow their guests to continue enjoying campfires during a Restricted Fire Zone period provided certain conditions are met.

For more information, visit:
ontario.ca/forestfire.



How will I know if I'm in a Restricted Fire Zone?

The Ministry of Natural Resources and Forestry posts highly visible green and red Restricted Fire Zone signs along roadways. Restricted Fire Zone posters are posted at popular camping spots, and in sport lodges, gas stations, and stores.

Advisories are issued to radio, television, print media and the internet, indicating the specific areas affected using the Zone numbers on the Restricted Fire Zone map.

For more information on **Restricted Fire Zones** please call your local Ministry of Natural Resources and Forestry office.

For areas below the --- line on the map call your local Municipal Fire Department.

**To report a wildfire in northern Ontario, call
310-FIRE (3473).**



Did You Know?

A forest fire is any wildfire or prescribed fire that is burning in forested areas, grass, or alpine/tundra vegetation. A forest fire is divided into a number of different parts:

The Fire Perimeter

The entire outer edge boundary of a fire. The fire perimeter is sometimes referred to as the fire's edge.

The Head of a Fire

The head is the most rapidly spreading part of the fire's perimeter and has the greatest fire intensity. It is usually driven by the wind, the uphill effects of slope, or the flammability of the forest fuel.

Flanks

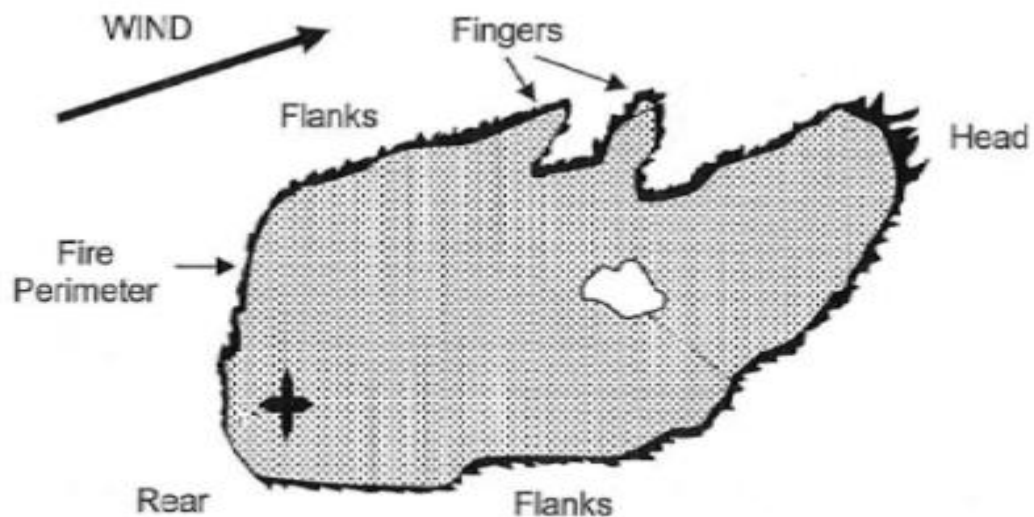
Those portions of the fire perimeter that are between the head and rear of the fire, and which are roughly parallel to the main direction of fire spread.

Rear

The portion of the fire perimeter that is opposite to the head. The rear is usually the slowest spreading part of the fire.

Finger

The long narrow extensions projecting from the main body of the fire resulting in an irregular fire perimeter. This fire pattern can happen when the forest fuel in the finger is more conducive to increased fire spread than the surrounding forest.



Contact Numbers and Online Information

For more information about travel restrictions: 705-475-5546

For general information about the fire situation: 705-564-6165

For information about highway closures: 5-1-1

For inquiries regarding Ontario Parks closures and updates:

- Finalyson Point (including lady Evelyn-Smoothwater, Obabika River, Makobe-Grays, Solace and Sturgeon River): 705-569-3205
- Marten River: 705-892-2200



FOLLOW: @ONforestfires @ONfeudeforet



WEB: ontario.ca/forestfire ontario.ca/incendiedeforet



CALL: Fire Updates 1-705-564-6165 Travel Updates 705-475-5546