



TEMAGAMI FIRST NATION

CAPITAL PROJECTS UPDATE



MAY 2017

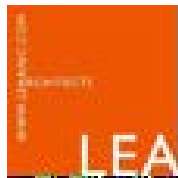
Construction Management Team (CMT)

Jamie Koistinen, Capital Projects Manager
Sheri Mathias, Capital Projects Administrator
Chief Arnold Paul
Virginia Paul, Executive Director
Vicky Blake, Finance Manager
Tom Mathias, Com. Infrastructure Manager
Duane Paul, CET. Community Member
New member to be announced soon!

We can be reached at
**Lands & Resources
Office**
(705) 237-8600



**AT THE MARCH 7, 2017, CHIEF & COUNCIL MEETING,
COUNCIL MOTIONED TO APPROVE THE SERVICES OF
LEA ARCHITECTS**



Larocque Elder Architects, Architects Inc. is located in North Bay, Ontario. Founded and directed by architects Jean Philippe Larocque and Iris Ruth Elder, the architectural firm, comprised of seven dedicated individuals, is committed to providing quality architectural services throughout Northern Ontario. With over 20 years of architectural experience, LEA has been involved in numerous projects mainly in the areas of North Bay, Sudbury, Sturgeon Falls, Mattawa, Ottawa, Toronto and Montreal.

LEA Architects successful relationships with other First Nation Communities



**Wahnapiatae First Nation
Centre of Excellence
14,000 sq.ft.
Admin/community centre**



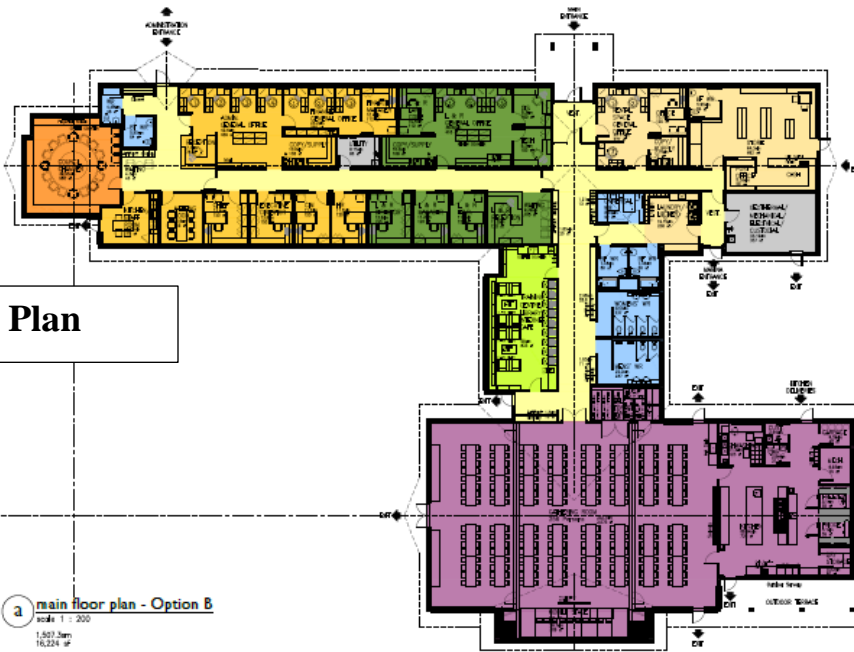
**Sheguiandah First Nation
Round House**



**Union of Ontario Indians
Administration Building**

Temagami First Nation – New Multi-Use Facility

Floor plan and site plan have been reviewed by Construction Management Team, Chief & Council and Staff. Client authorization to proceed signed by Chief & Council on April 11, 2017



Floor Plan

Construction Style:

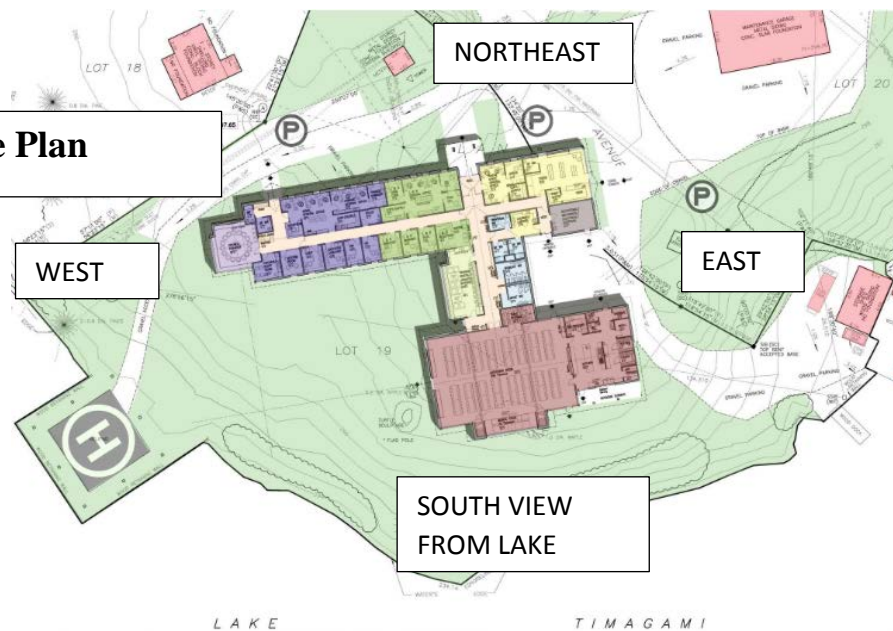
- Block foundation
- Stick frame construction
- 50 foot trusses

Alternative energy:

- Solar chasers
- Geothermal heating/cooling
- 3' overhang of roof acts as a natural dormer to the sun

Building Features:

- Air exchanger
- Artist showcase
- Artifact areas throughout
- Laundry mat
- Walk-in fridge/freezer
- Commercial space
- Barrier free washroom with shower



Site Plan

16,200 sq.ft. entire foot print of Multi-Use Facility

- 3575 sq.ft. Community hall portion
- 1040 sq.ft. Industrial kitchen (walk-in fridge/freezer)
- 1752 sq.ft. Administration Offices
- 580 sq.ft. Council Chambers
- 635 sq.ft. training/library centre
- 2000 sq.ft. commercial office space includes Store & Post Office
- 1050 sq.ft. L&R Department

3D CONCEPT OF THE EXTERIOR VIEWS OF NEW MULTI-USE FACILITY

North Elevation



East Elevation



South Elevation



West Elevation



Sun beaming on the new Multi-Use Facility at noon, the overhang of the roof helps protect the new building from the elements.

